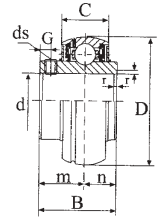
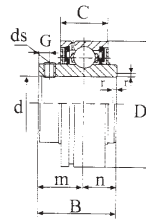


Ball Bearings For Bearing Units With Set Screws

UC 200

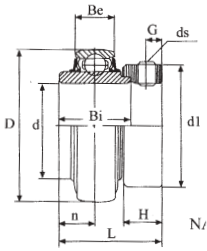
RB 200



Ball Bearings for Bearing Units

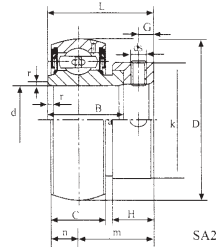
Bearing Number	Shaft Dia. d		Dimensions (mm)							Basic Load Ratings (kN)		Weight kg	
	in	mm	D	B	C	n	m	G	d _s	Cr	Cor		
UC, RB	201	1/2	12	40	27.4	14	11.5	15.9	4.5	1/4-18 UNF M5 x 0.8	9.57	4.79	0.18
	201-8		0.18										
	201-9		0.17										
	202	9/16	15	47	31	16	12.7	18.3	5	1/2-28 UNF M6 x 1	12.8	6.65	0.17
	202-10		0.17										
	203	11/16	17	52	34.1	17	14.3	19.8	5.5	1/2-28 UNF M6 x 1	14.0	7.88	0.17
	203-11		0.16										
	204-12	3/4	20	62	38.1	19	15.9	22.2	6	1/2-28 UNF M6 x 1	19.5	11.5	0.15
	204		0.18										
	205-14	7/8	25	72	42.9	20	17.5	25.4	7	5/16-14 UNF M8 x 1	25.5	15.2	0.23
	205-15												0.21
	205	15/16	30	80	49.2	21	19	30.2	8	5/16-24 UNF M8 x 1	29.55	18.0	0.20
	205-16												0.20
	206-18	1	35	85	49.2	22	19	30.2	8	5/16-24 UNF M8 x 1	31.5	20.5	0.35
	206-18												0.33
	206	1-1/16	40	90	51.6	24	19	32.6	10	3/8-24 UNF M10 x 1.25	35.0	23.2	0.33
	206-19												0.33
	206-20	1-1/4	45	90	51.6	24	19	32.6	10	3/8-24 UNF M10 x 1.25	35.0	23.2	0.31
207-20	0.31												
207-21	1-3/8	50	90	51.6	24	19	32.6	10	3/8-24 UNF M10 x 1.25	35.0	23.2	0.55	
207-21												0.52	
207-22	1-7/8	55	100	55.6	25	22.2	33.4	10	3/8-24 UNF M10 x 1.25	43.2	29.2	0.49	
207												0.49	
207-23	1-7/16	60	110	65.1	27	25.4	39.7	10	3/8-24 UNF M10 x 1.25	47.8	32.8	0.46	
208-24												0.69	
208-25	1-1/2	65	120	65.1	28	25.4	39.7	10	7/16-20 UNF M12 x 1.25	57.2	40.0	0.69	
208												0.66	
UC	209-26	1-5/8	70	125	74.6	30	30.2	44.4	12	7/16-20 UNF M12 x 1.25	60.8	45.0	0.65
UC													0.84
UC	209-27	1-11/16	75	130	77.8	32	33.3	44.5	12	7/16-20 UNF M12 x 1.25	66.8	49.5	0.80
UC													0.83
UC	209-28	1-3/4	80	140	82.6	33	33.3	49.3	12	7/16-20 UNF M12 x 1.25	71.5	54.2	0.81
UC													0.76
UC	210-30	1-15/16	85	150	85.7	35	34.1	51.6	12	7/16-20 UNF M12 x 1.25	83.5	63.8	0.74
UC													0.88
UC	210-31	1-7/8	90	160	96	38	39.7	56.3	12	7/16-20 UNF M12 x 1.25	95.8	71.5	0.81
UC													0.80
UC	210-32	2	90	160	96	38	39.7	56.3	12	7/16-20 UNF M12 x 1.25	95.8	71.5	0.80
UC													0.80
UC	211-32	2	90	160	96	38	39.7	56.3	12	7/16-20 UNF M12 x 1.25	95.8	71.5	1.27
UC													1.16
UC	211-34	2-3/16	90	160	96	38	39.7	56.3	12	7/16-20 UNF M12 x 1.25	95.8	71.5	1.12
UC													1.10
UC	211-35	2-3/16	90	160	96	38	39.7	56.3	12	7/16-20 UNF M12 x 1.25	95.8	71.5	1.10
UC													1.10
UC	212-36	2-1/4	90	160	96	38	39.7	56.3	12	7/16-20 UNF M12 x 1.25	95.8	71.5	1.67
UC													1.60
UC	212-37	2-5/16	90	160	96	38	39.7	56.3	12	7/16-20 UNF M12 x 1.25	95.8	71.5	1.54
UC													1.53
UC	212	2-3/8	90	160	96	38	39.7	56.3	12	7/16-20 UNF M12 x 1.25	95.8	71.5	1.45
UC													1.45
UC	212-38	2-7/16	90	160	96	38	39.7	56.3	12	7/16-20 UNF M12 x 1.25	95.8	71.5	2.00
UC													1.92
UC	212-39	2-7/16	90	160	96	38	39.7	56.3	12	7/16-20 UNF M12 x 1.25	95.8	71.5	1.75
UC													1.75
UC	213-40	2-1/2	90	160	96	38	39.7	56.3	12	7/16-20 UNF M12 x 1.25	95.8	71.5	2.06
UC													2.05
UC	213	2-11/16	90	160	96	38	39.7	56.3	12	7/16-20 UNF M12 x 1.25	95.8	71.5	2.05
UC													2.05
UC	214-44	2-3/4	90	160	96	38	39.7	56.3	12	7/16-20 UNF M12 x 1.25	95.8	71.5	2.76
UC													2.43
UC	214	2-15/16	90	160	96	38	39.7	56.3	12	7/16-20 UNF M12 x 1.25	95.8	71.5	2.40
UC													2.32
UC	215-44	3	90	160	96	38	39.7	56.3	12	7/16-20 UNF M12 x 1.25	95.8	71.5	3.00
UC													2.80
UC	216	3-1/4	90	160	96	38	39.7	56.3	12	7/16-20 UNF M12 x 1.25	95.8	71.5	3.66
UC													3.45
UC	216-52	3-1/4	90	160	96	38	39.7	56.3	12	7/16-20 UNF M12 x 1.25	95.8	71.5	4.56
UC													4.46
UC	217-52	3-1/2	90	160	96	38	39.7	56.3	12	7/16-20 UNF M12 x 1.25	95.8	71.5	4.56
UC													4.46
UC	218	3-1/2	90	160	96	38	39.7	56.3	12	7/16-20 UNF M12 x 1.25	95.8	71.5	4.56
UC													4.46

With Eccentric Locking Collar NA 200



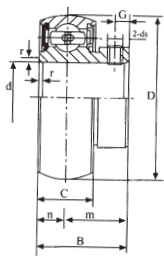
Bearing Number	Shaft Dia. d		Dimensions (mm)										Basic Load Ratings (kN)		Weight kg
	in	mm	D	Be	L	Bi	n	d1	H	G	ds (mm) in	Cr	Cor		
NA 204 204-12	3/4	20	47	17	43.6	34.1	17.1	33.3	13.5	5	M6 x 0.75 1/4-28	9.88	6.65	0.21 0.22	
NA 205 205-14 205-15 205-16	7/8 10/16 1	25	52	17	44.4	34.9	17.5	38.1	13.5	5	M6 x 0.75 1/4-28	10.78	9.93	0.25 0.28 0.27 0.25	
NA 206 206-18 206-19 206-20	1-1/8 1-7/16 1-1/4	30	62	19	48.4	36.5	18.3	44.5	15.9	6	M6 x 0.75 1/4-28	14.97	11.31	0.39 0.41 0.39 0.36	
NA 207 207-20 207-22 207-23	1-1/4 1-3/8 1-7/8	35	72	20	51.2	37.7	18.8	55.0	17.5	6.5	M8 x 1 5/16-24	19.75	15.3	0.60 0.66 0.60 0.57	
NA 208 208-24 208-25	1-1/2 1-7/8	40	80	21	56.4	42.9	21.4	60.3	18.3	6.5	M8 x 1 5/16-24	25.09	19.84	0.77 0.81 0.77	
NA 209 209-26 209-27 209-28	1-5/8 1-11/16 1-3/4	45	85	22	56.4	42.9	21.4	63.5	18.3	6.5	M8 x 1 5/16-24	25.14	20.46	0.84 0.93 0.88 0.84	
NA 210 210-30 210-31	1-7/8 1-15/16	50	90	22	62.7	49.2	24.6	69.9	18.3	6.5	M8 x 1 5/16-24	26.98	23.18	1.02 1.03 1.02	
NA 211 211-32 211-34 211-35	2 2-1/8 2-3/16	55	100	25	71.4	55.5	27.8	76.2	20.7	8.0	M10 x 1.25 3/8-24	33.37	29.22	1.37 1.58 1.41 1.37	
NA 212 212-36 212-39	2-1/4 2-1/16	60	110	27	77.8	61.9	31.0	84.1	22.3	8.0	M10 x 1.25 3/8-24	36.74	32.93	1.85 2.04 1.78	

With Eccentric Locking Collar SA 200 (Light-Duty)



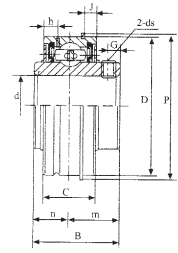
Bearing Number	Shaft Dia. d		Dimensions (mm)										Basic Load Ratings (kN)		Weight kg
	in	mm	D	L	B	C	n	m	K	H	G	d _t	Cr	Cor	
SA 201-8 201-10 201 202 203	1/2 5/8	12 15 17	40	28.6	19.1	12	6.5	12.6	28.6	13.5	4.5	M5 x 0.8	9.57	4.79	0.14 0.13 0.13 0.12 0.10
SA 204-12 204	3/4	20	47	31	21.5	14	7.5	14	32	13.5	4.7	1/4-28 UNF M6 x 1	12.8	6.65	0.15 1.14
SA 205-14 205-15 205-16 205	7/8 15/16 1	25	52	31	21.5	15	7.5	14	38.1	13.5	5	1/4-28 UNF M6 x 1	14.0	7.88	0.20 0.19 0.18 0.18
SA 206-17 206-18 206-19 206-20 206	1-1/16 1-1/8 1-3/16 1-1/4	30	62	35.7	23.8	16	9	14.8	44.4	15.9	6	1/4-28 UNF M6 x 1	19.5	11.5	0.35 0.33 0.31 0.29 0.29
SA 207-20 207-21 207-22 207-23	1-1/4 1-5/16 1-3/8 1-7/16		72	38.9	25.4	17	9.5	15.9	55.6	17.5	7	5/16-14 UNF	25.5	15.2	0.56 0.53 0.51 0.48
SA 208-24 208-25 208	1-1/2 1-9/16	40	80	43.7	30.1	18	11	19.1	60.8	18.3	7	5/16-14 UNF M8 x 1	29.55	18.0	0.68 0.65 0.64
SA 209-26 209-27 209-28 209	1-5/8 1-11/16 1-3/4	45	85	43.7	30.1	19	11	19.1	63.5	18.3	7	5/16-14 UNF M8 x 1	31.5	20.5	0.76 0.73 0.69 0.69
SA 210-30 210-31 210	1-7/8 1-15/16	50	90	43.7	30.1	20	11	19.1	69.8	18.3	7	3/8-24 UNF M10 x 1.25	35.0	23.2	0.83 0.79 0.77
SA 211-32 211-35 211	2 2-3/16	55	100	48.4	32.5	24	12	20.5	76.2	20.6	8	3/8-24 UNF M10 x 1.25	43.2	29.2	0.96 0.87 0.81

With Set Screws SB 200 (Light-Duty)



Bearing Number	Shaft Dia. d		Dimensions (mm)							Basic Load Ratings (kN)		Weight kg
	in	mm	D	B	C	n	m	G	d ₁	C _r	C _{or}	
SB 201-8	1/2											0.09
SB 201-10	5/16											0.08
SB 201		12	40	22	12	6	16	4.5	M5 x 0.8	9.57	4.79	0.08
SB 202		15										0.08
SB 203	1	17										0.07
SB 204-12	3/4											0.13
SB 204		20	47	24.7	14	7	17.7	4.5	1/4-28 UNF M6 x 1	12.86	6.65	0.12
SB 205-14	7/8											0.18
SB 205-15	15/16											0.17
SB 205-16	1		52	27	15	7.5	19.5	5	1/4-28 UNF M6 x 1	14.0	7.88	0.16
SB 205		25										0.16
SB 206-17	1-1/16											0.28
SB 206-18	1-1/8											0.26
SB 206-19	1-3/16											0.24
SB 206-20	1-1/4		62	30.3	16	8	22.3	5	1/4-28 UNF M6 x 1	19.5	11.5	0.23
SB 206		30										0.23
SB 207-20	1-1/4											0.43
SB 207-21	1-5/16											0.41
SB 207-22	1-3/8											0.38
SB 207-23	1-7/16		72	32.9	17	8.5	24.4	6.5	5/16-14 UNF M8 x 1	25.5	15.2	0.37
SB 207		35										0.37
SB 208-24	1-1/2											0.60
SB 208-25	1-9/16											0.58
SB 208		40	80	34	18	9	25	7.5	5/16-24 UNF M8 x 1	29.55	18.0	0.57
SB 209-26	1-5/8											0.80
SB 209-27	1-11/16											0.78
SB 209-28	1-3/4											0.75
SB 209		45	85	41.2	19	10.2	31	8	5/16-24 UNF M8 x 1	31.5	20.5	0.75
SB 210-30	1-7/8											0.95
SB 210-31	1-15/16											0.90
SB 210		50	90	43.5	20	10.9	32.6	9.2	3/8-24 UNF M10 x 1.25	35.0	23.2	0.85
SB 211-32	2											1.10
SB 211-35	2-3/16											1.00
SB 211		55	100	45.3	21	11.8	33.5	9.8	3/8-24 UNF M10 x 1.25	43.2	29.2	1.00
SB 212-36	2-1/4											1.30
SB 212-39	2-7/16											1.25
SB 212		60	110	53.7	22	14.9	38.8	9.8	3/8-24 UNF M10 x 1.25	47.8	32.8	1.25

Ball Bearings for Bearing Units



Bearing Number	Shaft Dia. d		Dimensions (mm)										Basic Load Ratings (kN)		Weight kg	
	in	mm	D	B	C	n	m	h	J	P	G	d _s	Cr	Cor		
SER 210-8	1/2															0.26
210-10	5/8		47	30.963	15.873	10.31	20.65	3.8	2.4	52.5	4.5	1/4-28 UNF	12.8	6.65	0.24	
SER 204-12	3/4		47	30.963	15.875	10.31	20.65	3.8	2.4	52.5	4.5	1/4-28 UNF	12.8	6.65	0.22	
SER 205-14	7/8														0.21	
205-15	15/16											1/4-28 UNF	14.0	7.88	0.30	
205-16	1		52	34.925	19.05	13.09	21.84	5.2	2.4	57.7	5.0				0.28	
SER 206-17	1/16														0.42	
206-18	1-1/8														0.40	
206-19	1-3/16		62	38.1	22.2	15.9	22.2	5.56	3.2	67.5	5.0	1/4-28 UNF	19.5	11.5	0.38	
206-20	1-1/4														0.36	
SER 207-20	1-1/4														0.62	
207-21	1-5/16														0.59	
207-22	1-3/8		72	42.9	23.8	17.5	25.4	5.56	3.2	78.2	6	5/16-24 UNF	25.5	15.2	0.56	
207-23	1-7/16														0.53	
SER 208-24	1-1/2														0.91	
208-25	1-9/16		80	49.2	27.8	19	30.1	6.35	3.2	86.5	8	5/16-24 UNF	29.55	18.0	0.88	
SER 209-26	1-5/8														1.05	
209-27	1-11/16											5/16-24 UNF	31.5	20.5	1.00	
209-28	1-3/4		85	49.2	27.8	19	30.1	6.35	3.2	91.3	8				0.97	
SER 210-30	1-7/8														1.10	
210-31	1-15/16		90	51.6	28.58	19	32.6	7.54	3.2	96	9	3/8-24 UNF	35.0	23.2	1.05	
SER 211-32	2														1.36	
211-34	2-1/8												3/8-24 UNF	43.2	29.2	1.25
211-35	2-3/8		100	55.6	30.1	22.2	33.4	7.45	3.2	106.3	9				1.19	
SER 212-36	2-1/4														1.82	
212-38	2-3/8												3/8-24 UNF	47.8	32.8	1.67
212-39	2-7/16		110	65.1	31.75	25.4	39.7	7.54	3.20	116.4	10				1.59	