

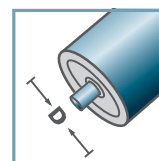
MTR-16			
Type	Di ±0.1	Da ±0.2	Load Rating C [daN]
MTR-30x1,2.16	27,6	29,6	30
MTR-30x1,5.16	27,3	29,6	30

Other dimensions on request!

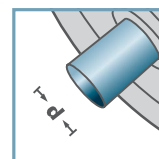
- ☛ Housing: Steel, Zinc plated
- ☛ Bearing RL-16
 - ☛ Bearing Shell: Steel, Hardened
 - ☛ Inner Race: Steel, Hardened, Zinc plated
 - ☛ Ball Cage: Plastic
 - ☛ Ball: Steel



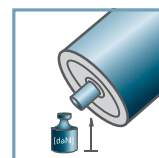
MTR-16



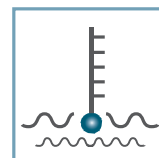
D [mm]
30



d [mm]
6; 8; 10



C [daN]
30



T [°C]
-50° - 100°



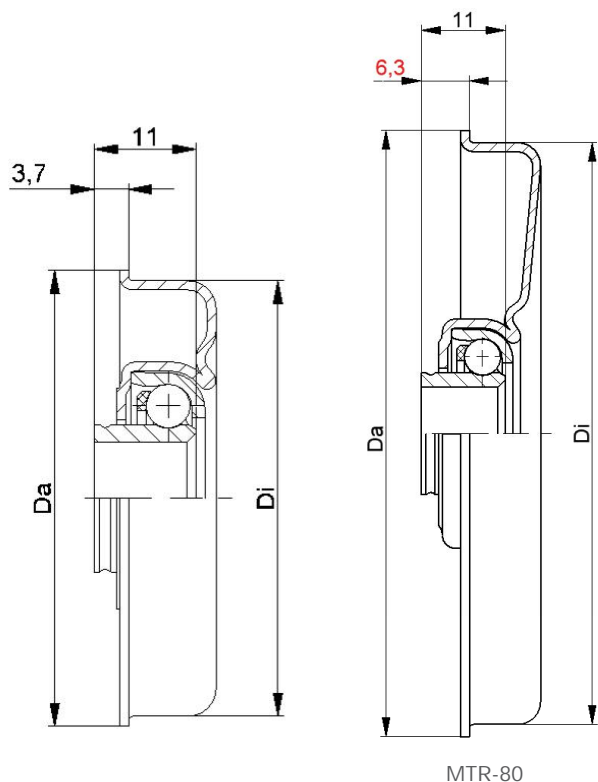
Oil



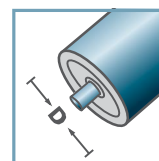
Carton [pcs.]

50/500

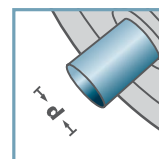
MTR



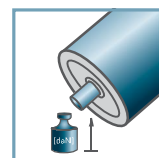
MTR-20



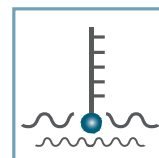
D [mm]
40 - 80



d [mm]
8; 10; 12; SW11



C [daN]
80



T [°C]
-50° - 100°



Oil



Carton [pcs.]

ø40: 250
ø48: 100/350
ø50: 100/350
ø60: 200
ø80: 100

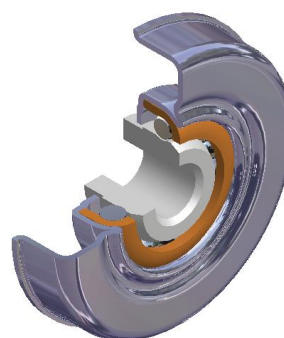
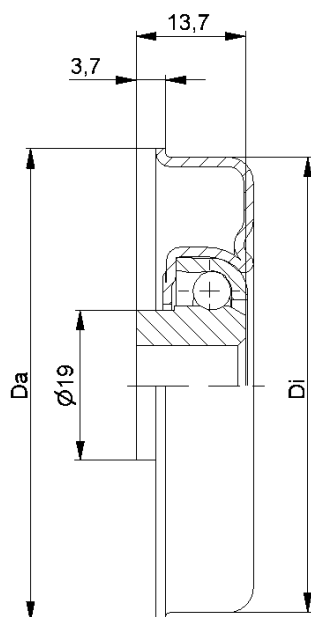
MTR-20			
Type	Di ±0.1	Da ±0.2	Load Rating C [daN]
MTR-40x1,5.20	37,3	39,5	80
MTR-40x2,0.20	36,3	39,5	80
MTR-48x1,5.20	45,3	47,5	80
MTR-50x1,5.20	47,3	49,5	80
MTR-50x2,0.20	46,3	49,5	80
MTR-60x1,5.20	57,3	59,5	80
MTR-60x2,0.20	56,3	59,5	80
MTR-80x2,0.20	76,4	79,5	80

Other dimensions on request!

- ☛ Housing: Steel, Zinc plated
- ☛ Bearing RL-20
 - ☛ Bearing Shell: Steel, Hardened
 - ☛ Inner Race: Steel, Hardened, Zinc plated
 - ☛ Ball Cage: Plastic
 - ☛ Ball: Steel



MTR



MTR-30-2			
Type	Di ±0.1	Da ±0.2	Load Rating C [daN]
MTR-50x1,5.30-2	47,3	49,5	120
MTR-50x2,0.30-2	46,3	49,5	120
MTR-60x1,5.30-2	57,3	59,5	120
MTR-60x2,0.30-2	56,3	59,5	120
MTR-80x2,0.30-2	76,4	79,5	120

Other dimensions on request!

☛ Housing: Steel, Zinc plated

☛ Bearing RL-30-2

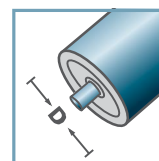
☛ Bearing Shell: Steel, Hardened

☛ Inner Race: Steel, Hardened

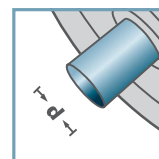
☛ Ball: Steel



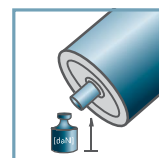
MTR-30-2



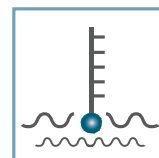
D [mm]
50 - 80



d [mm]
10;12; 14; 15;
SW11



C [daN]
120



T [°C]
0° - 100°



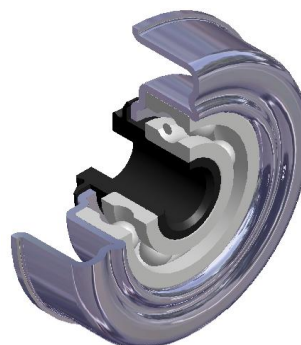
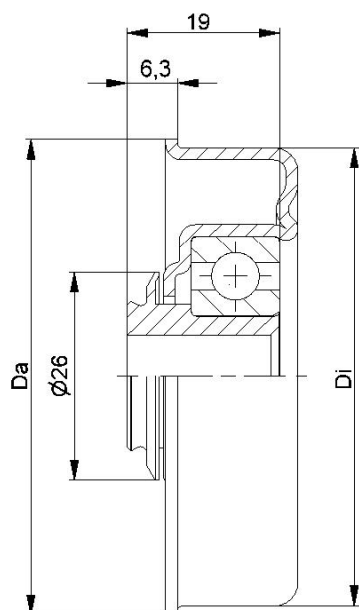
EP 0



Carton [pcs.]

ø50: 300
ø60: 200
ø80: 100

MTR



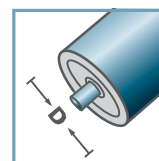
MTR-40			
Type	Di ±0.1	Da ±0.2	Load Rating C [daN]
MTR-50x1,5.40	47,3	49,5	120
MTR-50x2,0.40	46,3	49,5	120
MTR-60x1,5.40	57,3	59,5	150
MTR-60x2,0.40	56,3	59,5	150
MTR-60x3,0.40	54,3	59,5	150
MTR-80x2,0.40	76,5	79,5	150

Other dimensions on request!

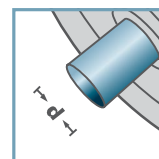
- Housing: Steel, Zinc plated
- Reducing Bush: Plastic
- Bearing 6202



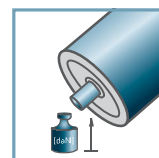
MTR-40



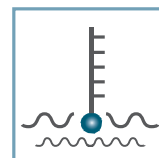
D [mm]
50 - 80



d [mm]
10; 12; SW11



C [daN]
120 - 150



T [°C]
0° - 80°



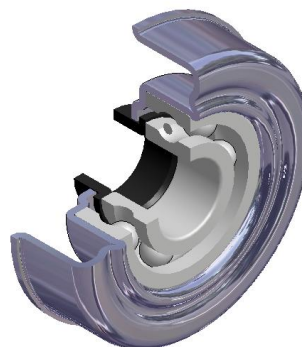
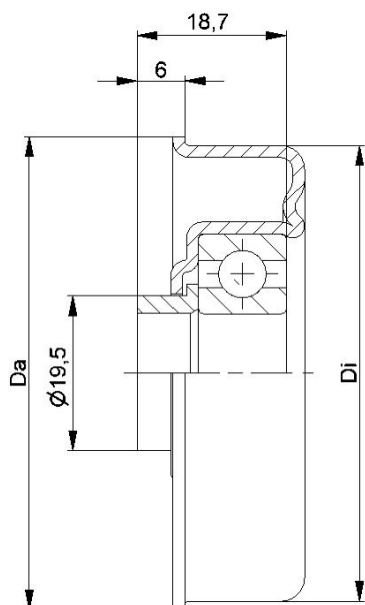
EP 2



Carton [pcs.]

ø50: 100
ø60: 150
ø80: 100

MTR



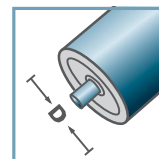
MTR-40.15			
Type	Di ±0.1	Da ±0.2	Load Rating C [daN]
MTR-50x1,5.40.15	47,3	49,5	120
MTR-50x2,0.40.15	46,3	49,5	120
MTR-60x1,5.40.15	57,3	59,5	150
MTR-60x2,0.40.15	56,3	59,5	150
MTR-60x3,0.40.15	54,3	59,5	150
MTR-80x2,0.40.15	76,5	79,5	150

Other dimensions on request!

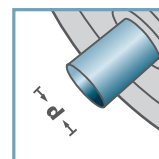
- Housing: Steel, Zinc plated
- Distance Bush: Plastic
- Bearing 6202



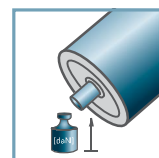
MTR-40.15



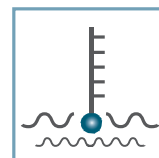
D [mm]
50 - 80



d [mm]
15



C [daN]
120 - 150



T [°C]
0° - 80°



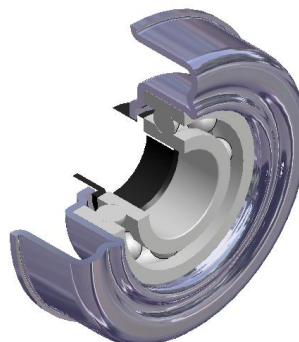
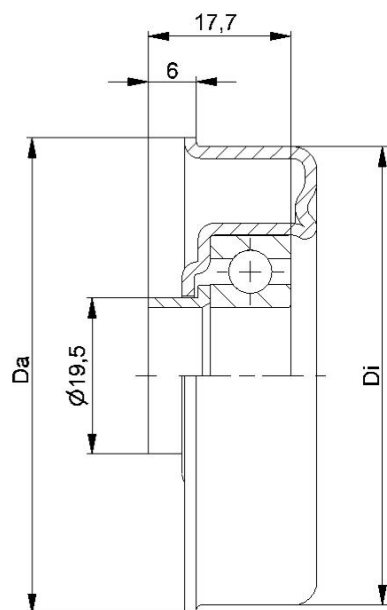
EP 2



Carton [pcs.]

ø50: 100
ø60: 150
ø80: 100

MTR



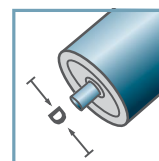
MTR-45.17			
Type	Di ±0.1	Da ±0.2	Load Rating C [daN]
MTR-50x1,5.45.17	47,3	49,5	120
MTR-60x2,0.45.17	56,3	59,5	150
MTR-60x3,0.45.17	54,3	59,5	150
MTR-80x2,0.45.17	76,5	79,5	150

Other dimensions on request!

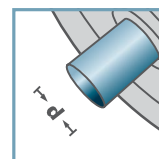
- Housing: Steel, Zinc plated
- Distance Bush: Plastic
- Bearing 6003



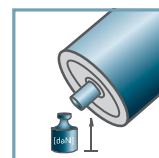
MTR-45.17



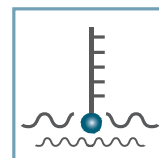
D [mm]
50, 80



d [mm]
17



C [daN]
120 - 150



T [°C]
0° - 80°



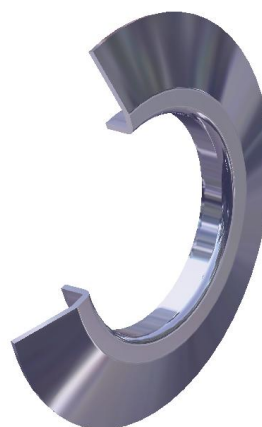
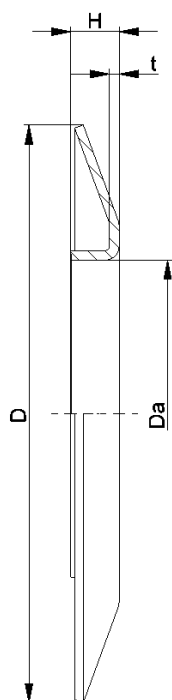
EP 2



Carton [pcs.]

ø50: 100
ø60: 150
ø80: 100

MTR



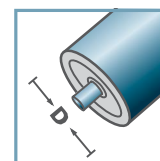
BS-				
Type	Da ±0.1	D -2	H ±0.5	t
BS-50-130	49,9	130	10	1,5
BS-60-130	59,9	130	10	1,5
BS-80-150	79,9	150	14	2,5
BS-89-150	88,9	150	14	2,5
BS-108-150	107,9	150	14	2,5

Other dimensions on request!

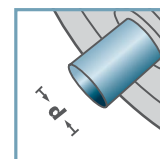
Wheel Flange: Steel



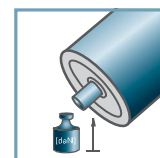
BS-



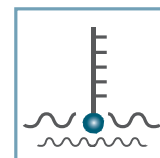
D [mm]
50 - 108



d [mm]
-



C [daN]
-



T [°C]
-



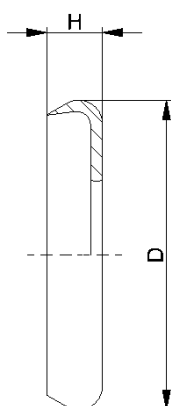
-



Carton [pcs.]



MTR

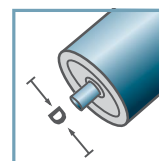


DK-MTR		
Type	D	H
DK-MTR-20	34	7
DK-MTR-30-2	39	7
Other dimensions on request!		

Seal Bonnet: Plastic

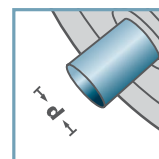


DK-MTR-



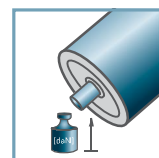
D [mm]

-



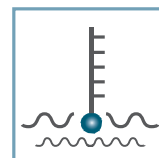
d [mm]

-



C [daN]

-



T [°C]

0° - 80°



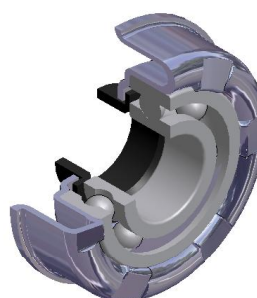
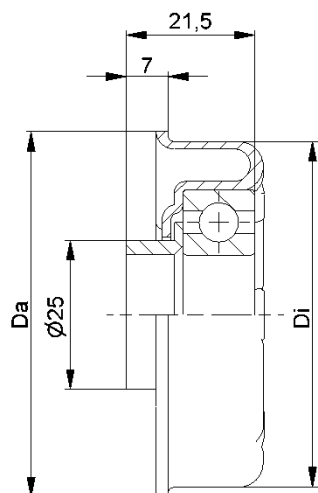
-



Carton [pcs.]

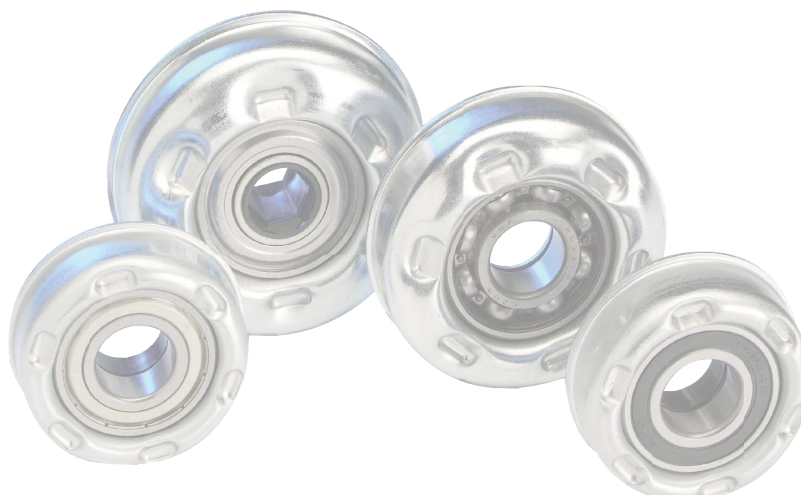
-

MTR

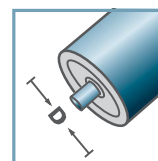


MTS-46			
Type	Di ±0.1	Da ±0.2	Load Rating C [daN]
MTS-63,5x2,9.46	58,1	61,5	200
Other dimensions on request!			

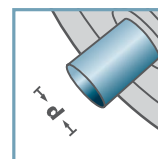
- ⚙ Housing: Steel, Zinc plated
- ⚙ Distance Bush: Plastic
- ⚙ Bearing 6004



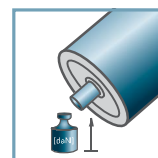
MTS-46



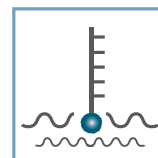
D [mm]
63,5



d [mm]
20



C [daN]
200



T [°C]
0° - 100°



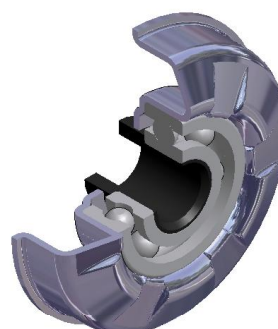
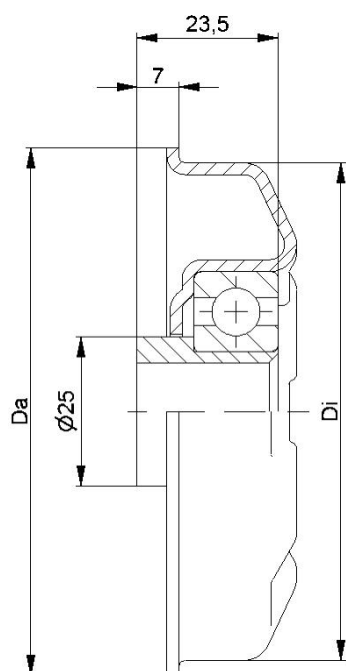
EP 2



Carton [pcs.]

50/100

MTS



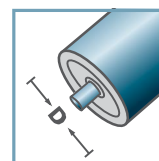
MTS-44			
Type	Di ±0.1	Da ±0.2	Load Rating C [daN]
MTS-80x2,0.44	76,5	79,5	250
MTS-80x3,0.44	74,5	79,5	250
MTS-89x3,0.44	83,5	88,5	250
MTS-89x3,25.44	83,0	88,5	250
MTS-108x3,25.44	102,0	107,5	250

Other dimensions on request!

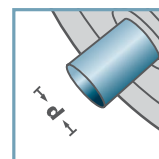
- Housing: Steel, Zinc plated
- Reducing Bush: Plastic
- Bearing 6204



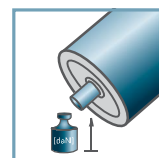
MTS-44



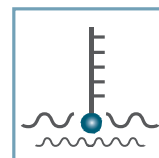
D [mm]
80 - 108



d [mm]
16; 17; SW14



C [daN]
250



T [°C]
0° - 100°



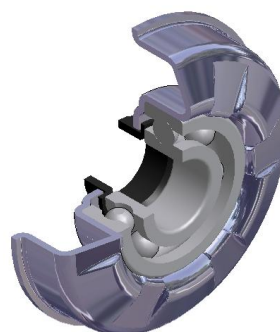
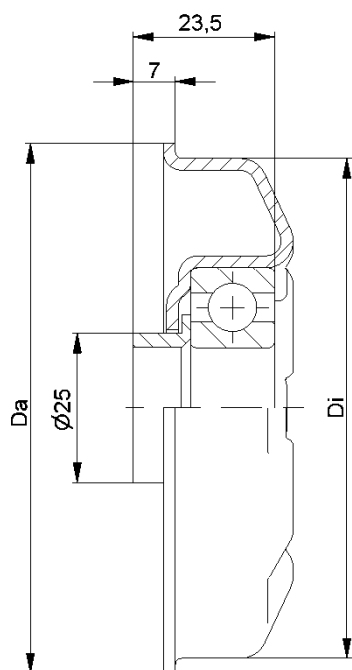
EP 2



Carton [pcs.]

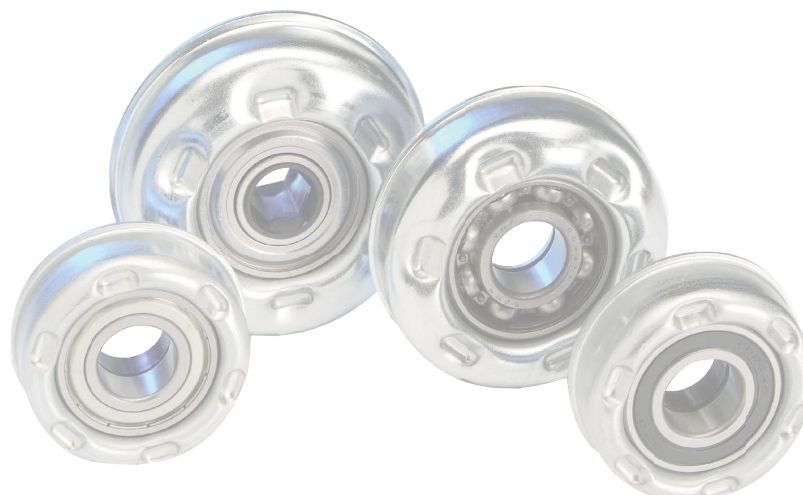
50

MTS

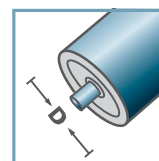
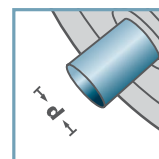
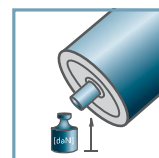
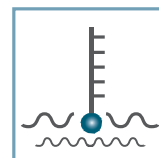


MTS-44			
Type	Di ±0.1	Da ±0.2	Load Rating C [daN]
MTS-80x2,0.44	76,5	79,5	250
MTS-80x3,0.44	74,5	79,5	250
MTS-89x3,0.44	83,5	88,5	250
MTS-89x3,25.44	83,0	88,5	250
MTS-108x3,25.44	102,0	107,5	250
Other dimensions on request!			

- ☛ Housing: Steel, Zinc plated
- ☛ Distance Bush: Plastic
- ☛ Bearing 6204



MTS-44


D [mm]
80 - 108

d [mm]
20

C [daN]
250

T [°C]
0° - 100°

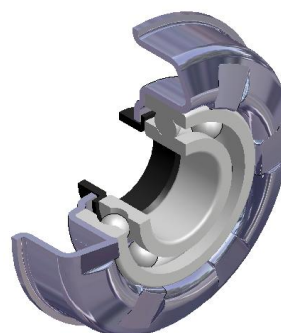
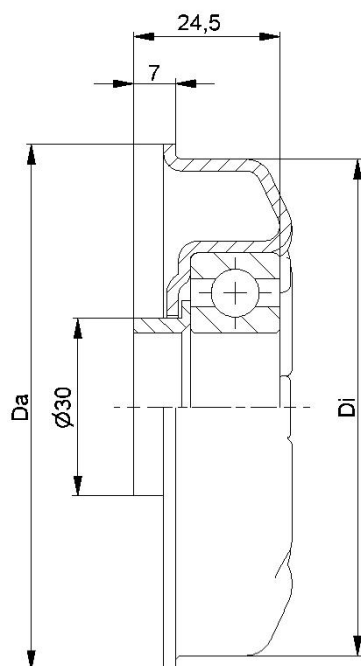

EP 2



Carton [pcs.]

50

MTS



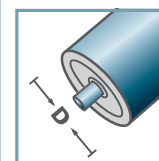
MTS-47			
Type	Di ±0.1	Da ±0.2	Load Rating C [daN]
MTS-89x3,0.47	83,5	88,5	250
MTS-108x3,25.47	102,0	107,5	250

Other dimensions on request!

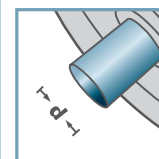
- ☛ Housing: Steel, Zinc plated
- ☛ Distance Bush: Plastic
- ☛ Bearing 6205



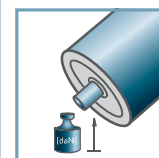
MTS-47



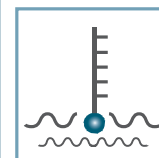
D [mm]
89 - 108



d [mm]
25



C [daN]
250



T [°C]
0° - 100°



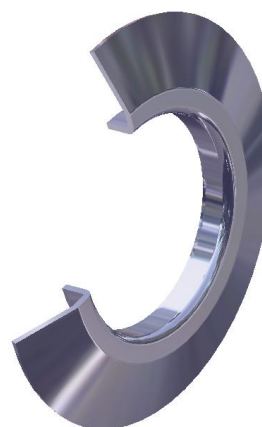
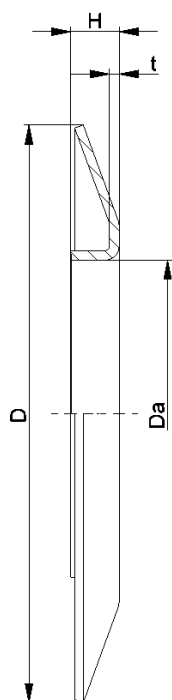
EP 2



Carton [pcs.]

50

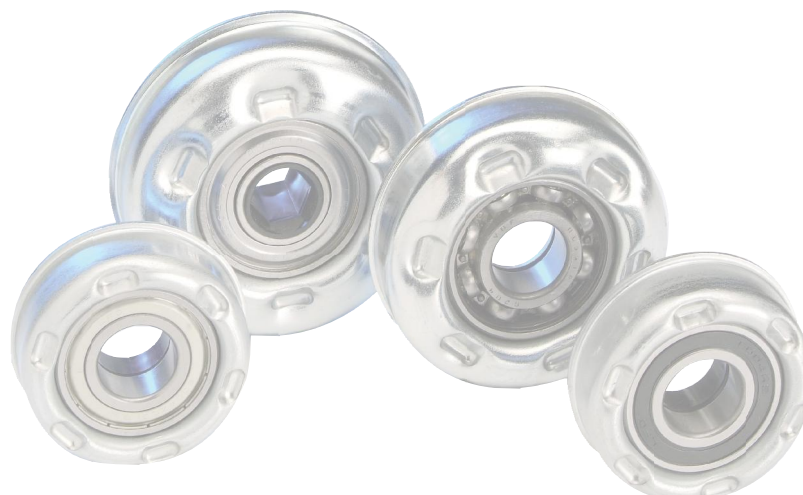
MTS



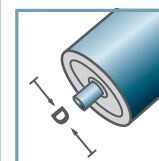
BS-				
Type	Da ±0.1	D -2	H ±0.5	t
BS-50-130	49,9	130	10	1,5
BS-60-130	59,9	130	10	1,5
BS-80-150	79,9	150	14	2,5
BS-89-150	88,9	150	14	2,5
BS-108-150	107,9	150	14	2,5

Other dimensions on request!

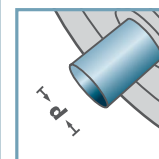
Wheel Flange: Steel



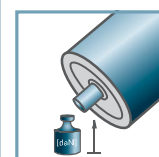
BS-



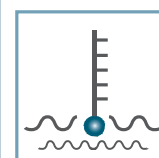
D [mm]
50 - 108



d [mm]
-



C [daN]
-



T [°C]
-



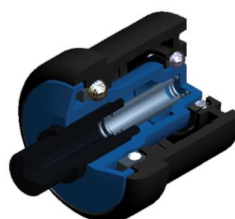
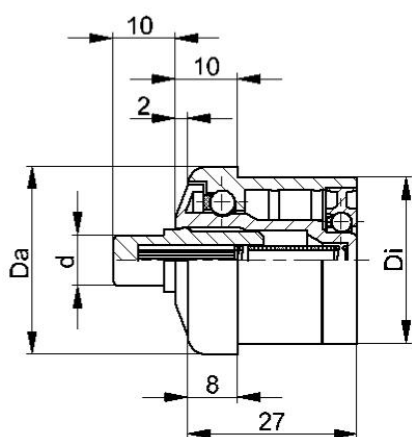
-



Carton [pcs.]



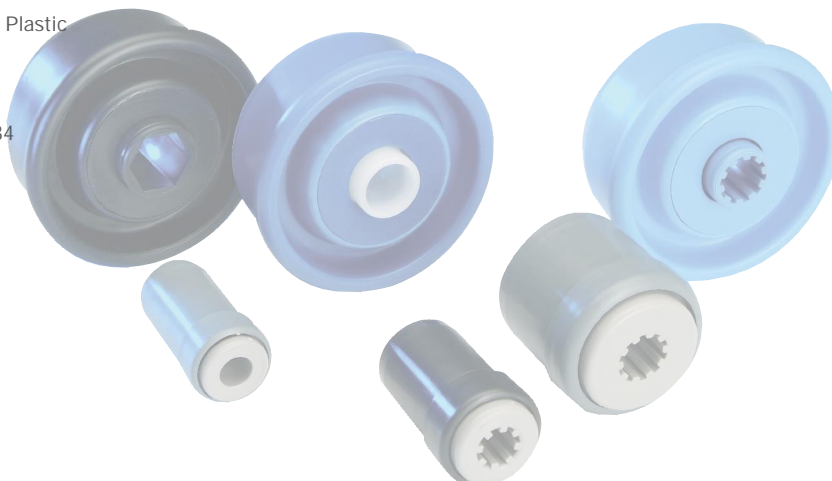
MTS



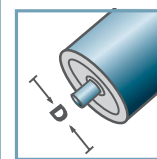
KTR-.00/.01 FA						
Type	Normal .00	Stainless .01	Di +0,25	Da	d	Load Rating C [daN]
KTR-20x1,5	x	x	17,1	19,9	6	8
KTR-30x1,8	x	x	26,5	29,9	8/10	10
KTR-40x2,3	x	x	35,5	39,9	8/10	10
KTR-50x2,8	x	x	44,6	49,9	8/10	20

Other dimensions on request!

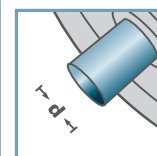
- ☛ Housing: Plastic
- ☛ Inner Race: Plastic
- ☛ Ball Cage: Plastic
- ☛ Shaft: Plastic
- ☛ Bearing Flange: Plastic
- ☛ Ball, Spring
 - ☛ 00: Steel
 - ☛ 01: 1.4034



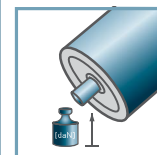
KTR-.00 FA
KTR-.01 FA



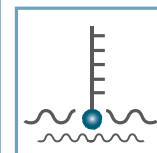
D [mm]
20, 30, 40, 50



d [mm]
6; 8; 10



C [daN]
8 - 20



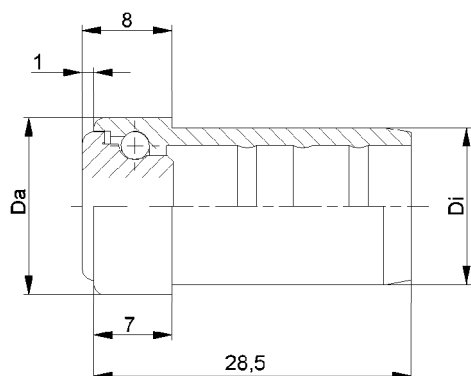
T [°C]
0° - 80°



Carton [pcs.]

ø20: 500/1000
ø30: 250/500
ø40: 250/500
ø50: 250

KTR

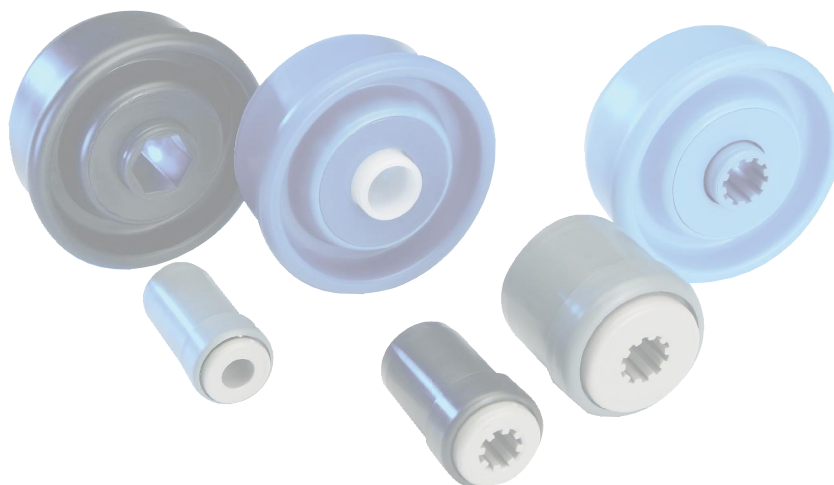
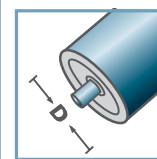
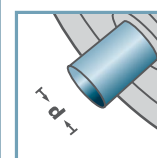
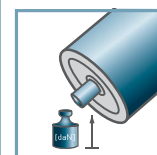
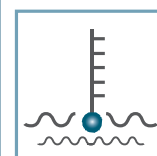


KTR-16.00/.01

Type	Normal .00	Stainless .01	Di +0,15	Da	Load Rating C [daN]
KTR-16x1,0	x	x	14,1	15,9	3

Other dimensions on request!

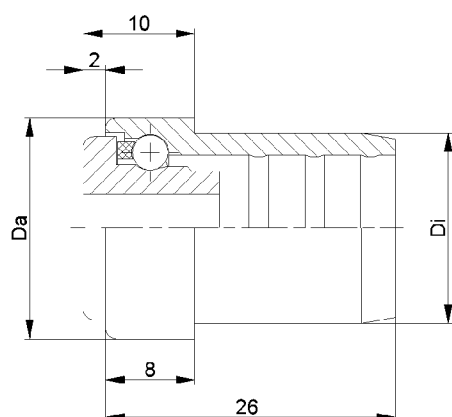
- ☛ Housing: Plastic
- ☛ Inner Race: Plastic
- ☛ Ball
 - ☛ 00: Steel
 - ☛ 01: 1.4034

KTR-16.00
KTR-16.01D [mm]
16d [mm]
5; 6C [daN]
3T [°C]
0° - 80°

Carton [pcs.]

500/2500

KTR

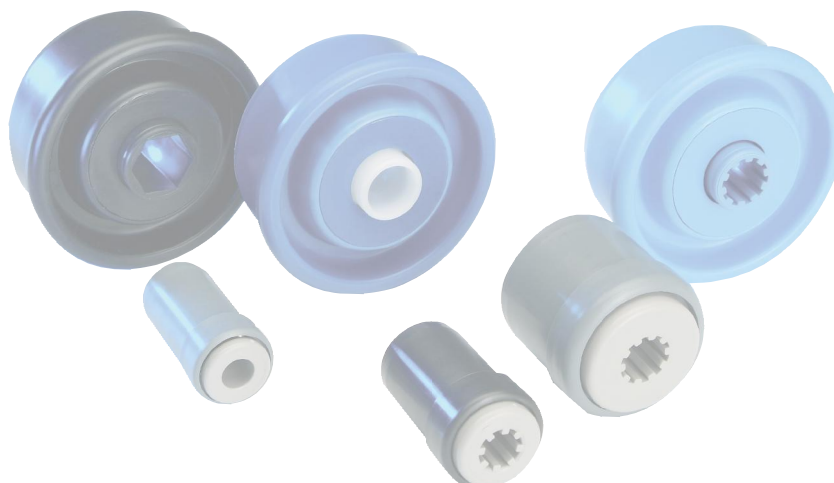
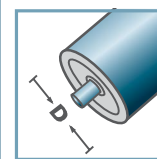
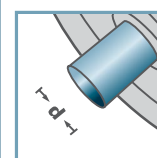
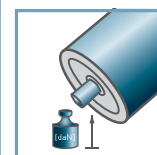
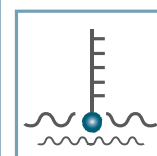


KTR-20.00/.01

Type	Normal .00	Stainless .01	Di +0,15	Da	Load Rating C [daN]
KTR-20x1,0	x	x	18,1	19,9	5
KTR-20x1,5	x	x	17,1	19,9	5

Other dimensions on request!

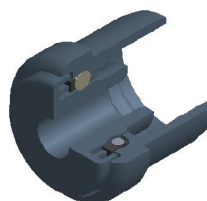
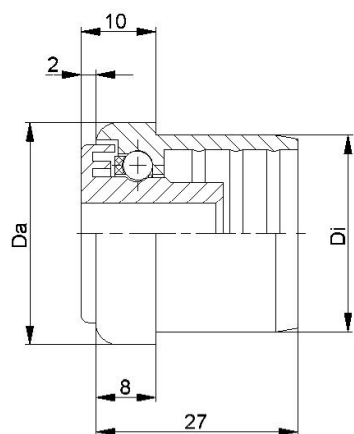
- ☛ Housing: Plastic
- ☛ Inner Race: Plastic
- ☛ Ball Cage: Plastic
- ☛ Ball
 - ☛ 00: Steel
 - ☛ 01: 1.4034

KTR-20.00
KTR-20.01D [mm]
20d [mm]
6; 8C [daN]
5T [°C]
0° - 80°

Carton [pcs.]

500/1000

KTR

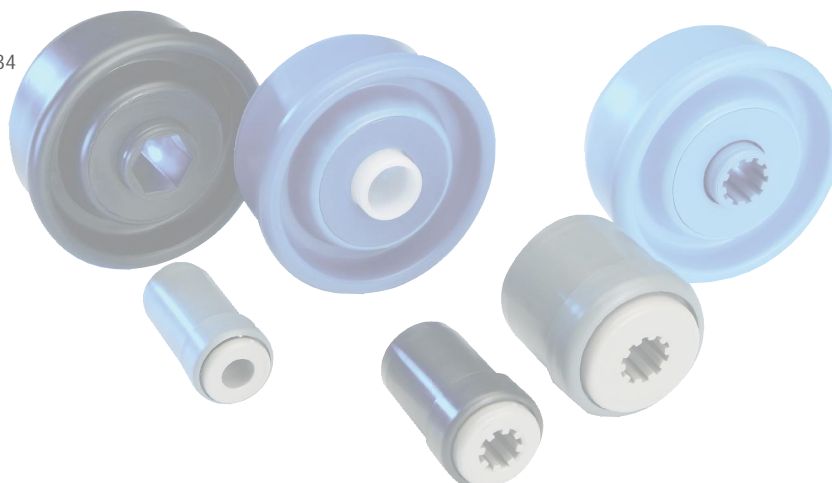
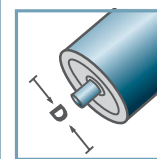
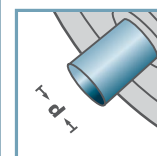
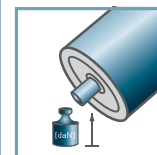
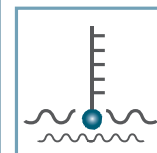


KTR-30.00/.01

Type	Normal .00	Stainless .01	Di +0,25	Da	Load Rating C [daN]
KTR-30x1,0	x	x	28,1	29,9	7
KTR-30x1,5	x	x	27,1	29,9	7
KTR-30x1,8	x	x	26,5	29,9	7
KTR-30x2,0	x	x	26,35	29,9	7

Other dimensions on request!

- ☛ Housing: Plastic
- ☛ Inner Race: Plastic
- ☛ Ball Cage: Plastic
- ☛ Ball
 - ☛ 00: Steel
 - ☛ 01: 1.4034

KTR-30.00
KTR-30.01D [mm]
30d [mm]
6; 8; 10C [daN]
7T [°C]
0° - 80°

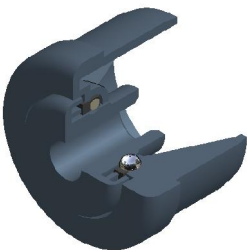
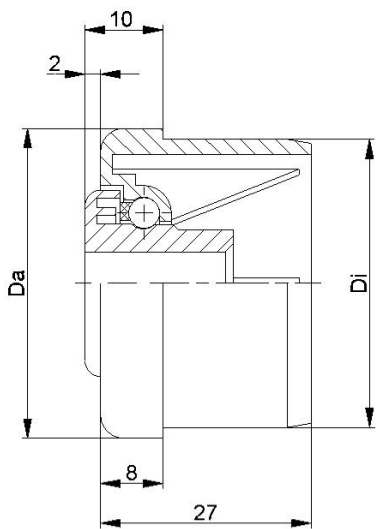
-



Carton [pcs.]

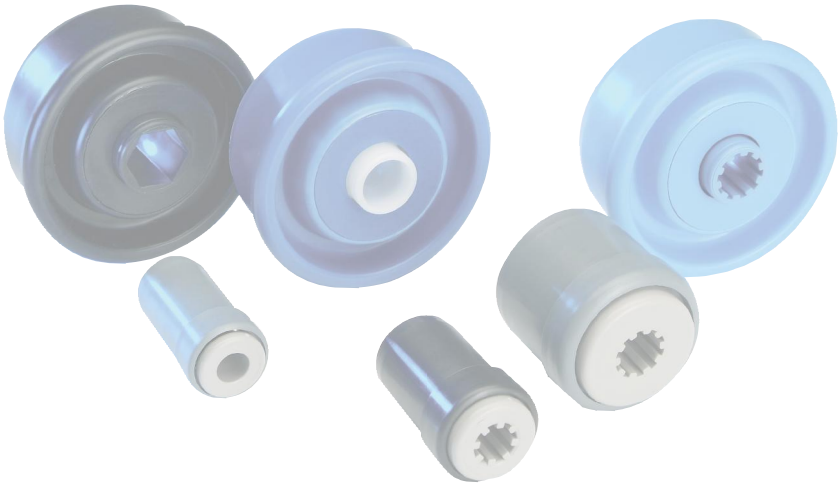
50/250/500

KTR

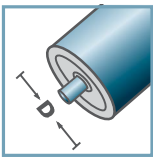


KTR-40.00/.01					
Type	Normal .00	Stainless .01	Di +0,25	Da	Load Rating C [daN]
KTR-40x1,5	x	x	37,1	39,9	7
KTR-40x2,3	x	x	35,5	39,9	7
Other dimensions on request!					

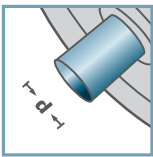
- ☛ Housing: Plastic
- ☛ Inner Race: Plastic
- ☛ Ball Cage: Plastic
- ☛ Ball
 - ☛ 00: Steel
 - ☛ 01: 1.4034



KTR-40.00
KTR-40.01



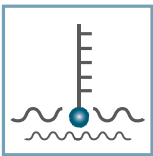
D [mm]
40



d [mm]
6; 8; 10



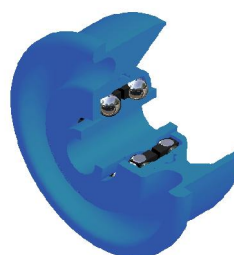
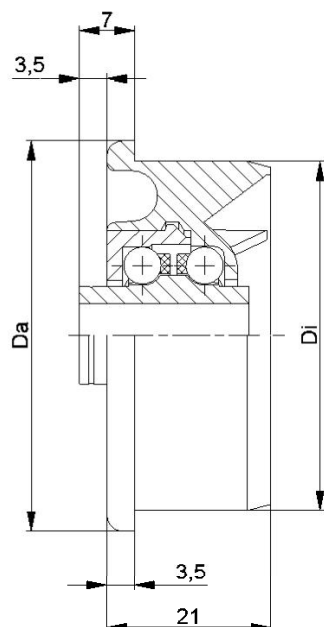
C [daN]
7



T [°C]
0° - 80°



Carton [pcs.]
50/250

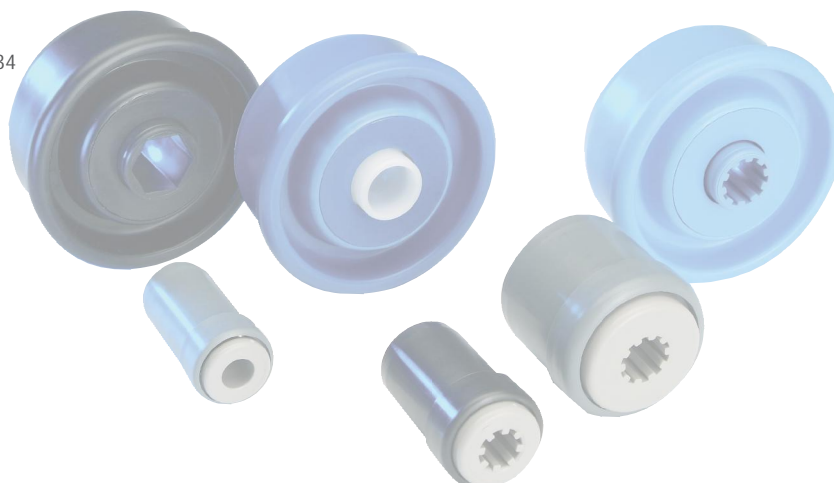
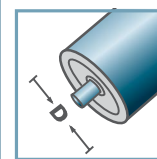
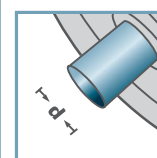
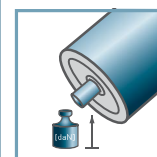
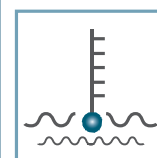


KTR-02/03

Type	Normal .02	Stainless .03	Di +0,2	Da	Load Rating C [daN]
KTR-50x1,5	x	x	47,3	49,9	15
KTR-50x2,0	x	x	46,3	49,9	15
KTR-50x2,8	x	x	44,6	49,9	15

Other dimensions on request!

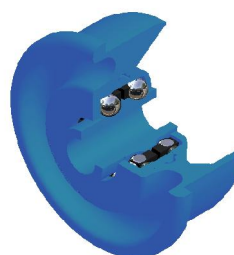
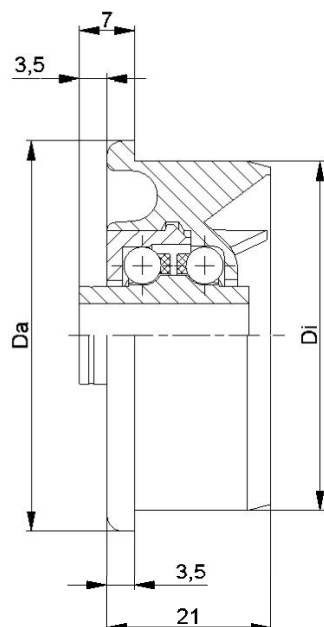
- ☛ Housing: Plastic
- ☛ Inner Race: Plastic
- ☛ Bearing Cap: Plastic
- ☛ Ball Cage: Plastic
- ☛ Ball
 - ☛ 02: Steel
 - ☛ 03: 1.4034

KTR-02
KTR-03D [mm]
50d [mm]
8; 10C [daN]
15T [°C]
0° - 80°

Carton [pcs.]

50x1,5: 250
50x2,0: 250
50x2,8: 250

KTR

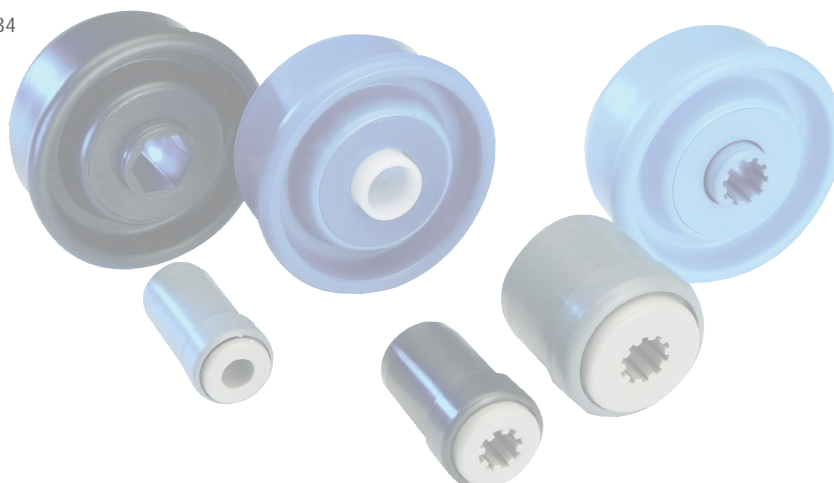
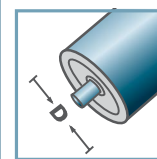
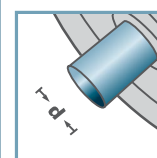
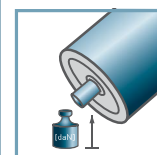
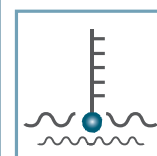


KTR-02/03

Type	Normal .02	Stainless .03	Di +0,2	Da	Load Rating C [daN]
KTR-50x1,5	x	x	47,3	49,9	10
KTR-50x2,8	x	x	44,6	49,9	10

Other dimensions on request!

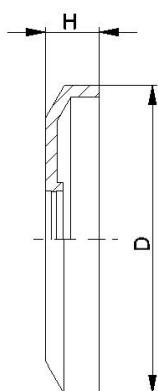
- ☛ Housing: Plastic
- ☛ Inner Race: Plastic
- ☛ Bearing Cap: Plastic
- ☛ Ball Cage: Plastic
- ☛ Ball
 - ☛ 02: Steel
 - ☛ 03: 1.4034

KTR-02
KTR-03D [mm]
50d [mm]
12; SW11C [daN]
10T [°C]
0° - 80°

Carton [pcs.]

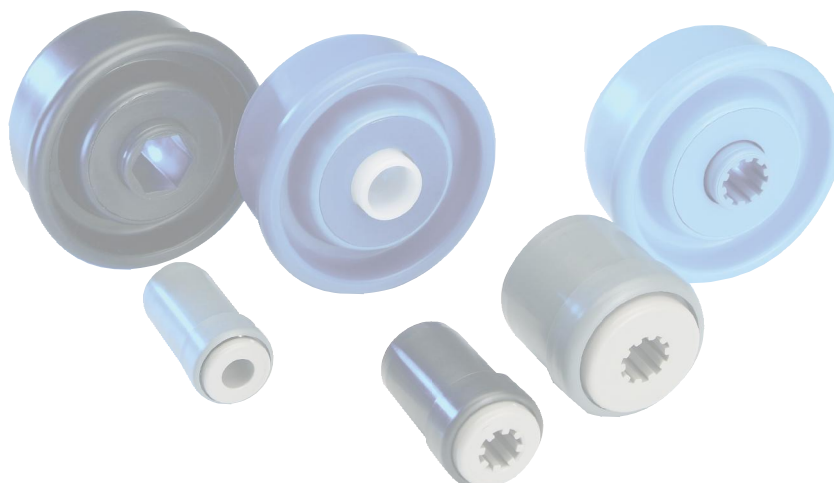
250

KTR

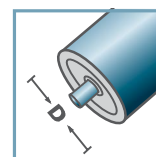


DK-KTR		
Type	D	H
DK-KTR-02	40,5	7
Other dimensions on request!		

 Seal Bonnet: Plastic

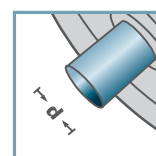


DK-KTR-02



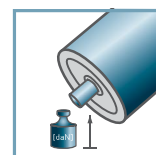
D [mm]

—



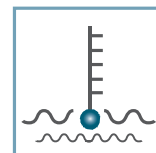
d [mm]

1



C [daN]

—

 $T [^{\circ}\text{C}]$

0° - 80°

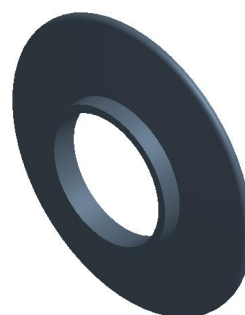
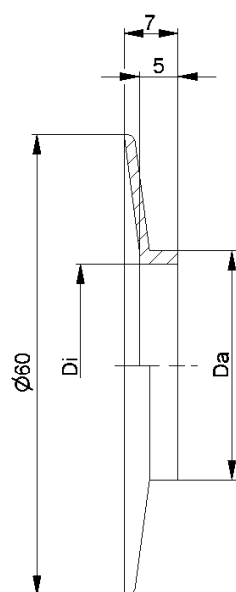


1



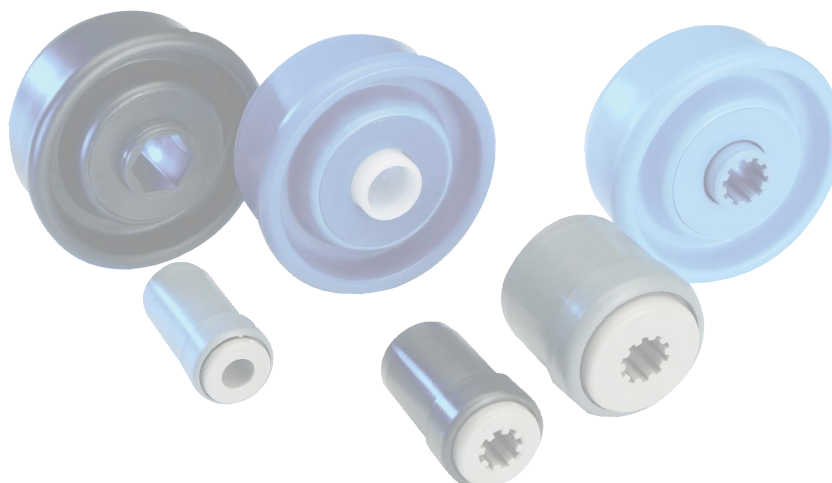
Carton [pcs.]

KTR

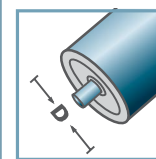


BS-		
Type	Di	Da
BS-30x1,8	26,5	29,9
BS-40x1,5	37,1	39,9
BS-40x2,3	35,5	39,9
Other dimensions on request!		

🔧 Wheel Flange: Plastic

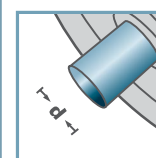


BS-



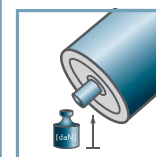
D [mm]

-



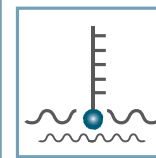
d [mm]

-



C [daN]

-



T [°C]

0° - 80°



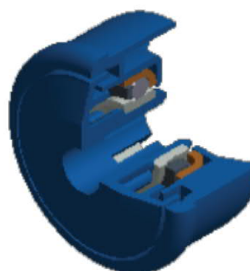
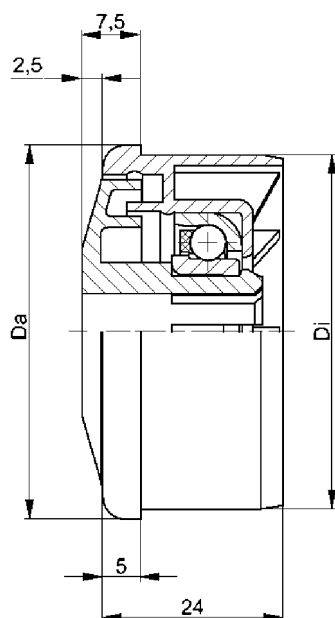
-



Carton [pcs.]

/

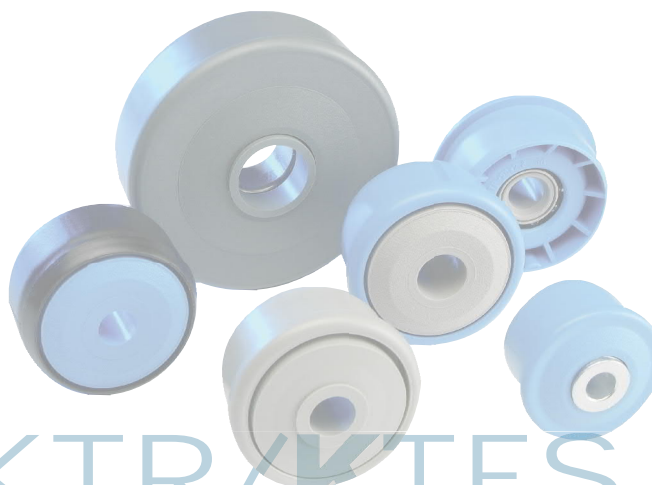
KTR



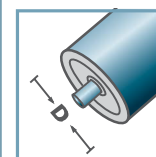
KTS-30			
Type	Di +0,2	Da	Load Rating C [daN]
KTS-50x1,5.30	47,3	49,9	80
KTS-50x2,8.30	44,6	49,9	80
KTS-60x1,5.30	57,3	59,9	80
Other dimensions on request!			

- ☛ Housing: Plastic
- ☛ Single Labyrinth Seal: Plastic
- ☛ Bearing RL-30
 - ☛ Bearing Shell: Steel, Hardened
 - ☛ Inner Race: Steel, Hardened
 - ☛ Ball Cage: Plastic
 - ☛ Ball: Steel

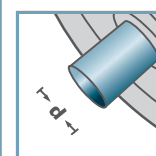
Please note: the single labyrinth seal for axis 15 mm is delivered separately and has to be locked at assembly.



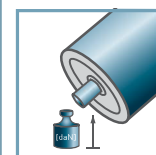
KTS-30



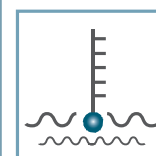
D [mm]
50 - 60



d [mm]
10; 12; 15; SW11



C [daN]
80



T [°C]
0° - 80°



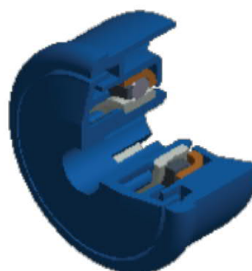
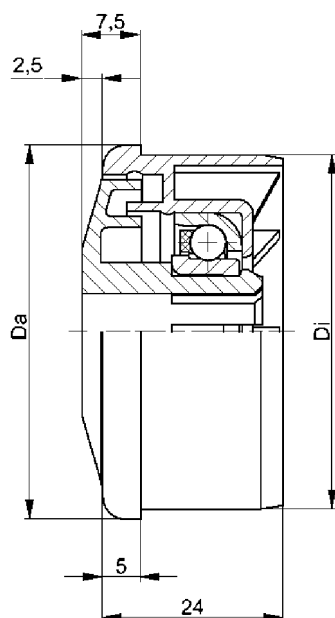
Oil



Carton [pcs.]

ø50: 250
ø60: 200

KTS/KTR/KTES

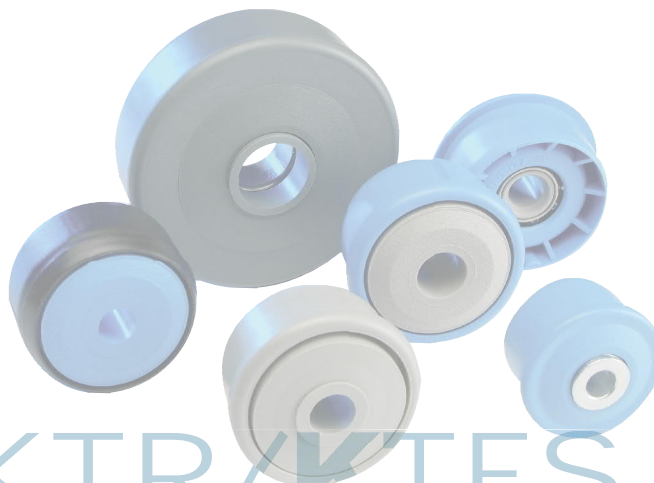


KTS-31			
Type	Di +0,2	Da	Load Rating C [daN]
KTS-50x1,5.31	47,3	49,9	25
KTS-50x2,8.31	44,6	49,9	25
KTS-60x1,5.31	57,3	59,9	25

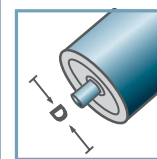
Other dimensions on request!

- ☛ Housing: Plastic
- ☛ Single Labyrinth Seal: Plastic
- ☛ Bearing RL-31
 - ☛ Bearing Shell: 1.4301
 - ☛ Inner Race: 1.4305
 - ☛ Ball Cage: Plastic
 - ☛ Ball: 1.4301

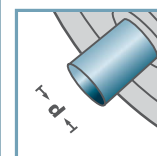
Please note: the single labyrinth seal for axis 15 mm is delivered separately and has to be locked at assembly.



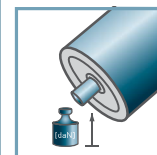
KTS-31



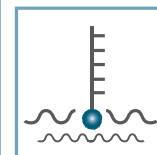
D [mm]
50 - 60



d [mm]
10; 12; 15; SW11



C [daN]
25



T [°C]
0° - 80°



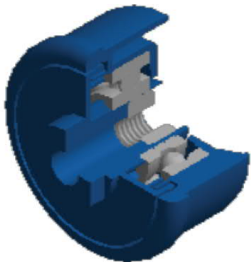
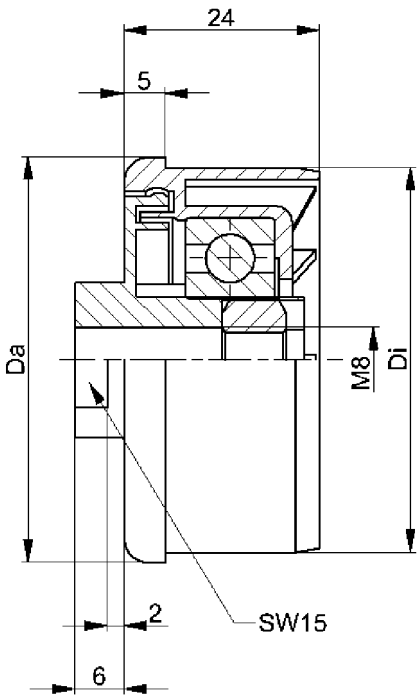
Oil



Carton [pcs.]

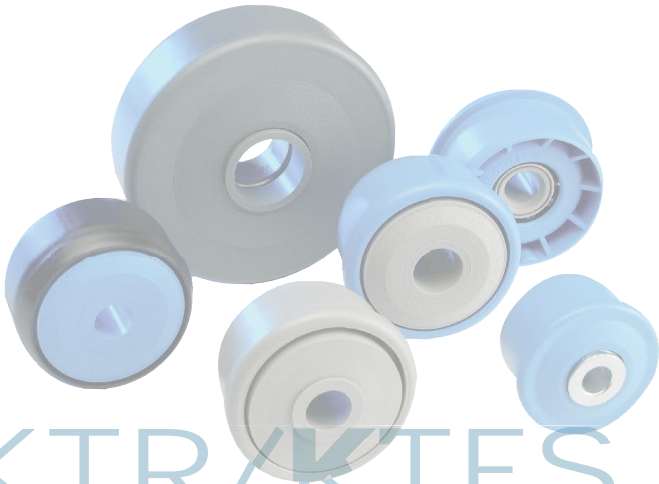
ø50: 250
ø60: 200

KTS/KTR/KTES

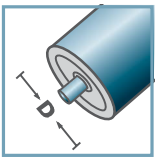


KTR-40.M8			
Type	Di +0,2	Da	Load Rating C [daN]
KTR-50x1,5.40	47,3	49,9	80
Other dimensions on request!			

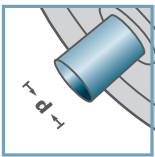
- Housing: Plastic
- Single Labyrinth Seal: Plastic
- Bearing 6202
- Hexagon Nut



KTR-40.M8



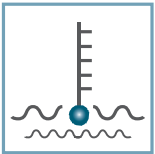
D [mm]
50



d [mm]
M8



C [daN]
80



T [°C]
0° - 80°



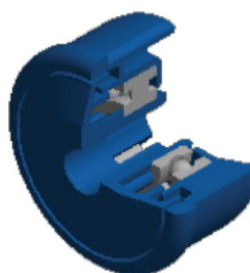
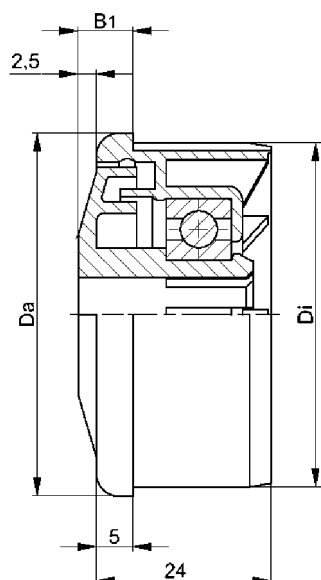
EP 2



Carton [pcs.]

ø50: 250

KTS/KTR/KTES



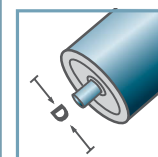
KTS-42				
Type	Di + 0,25	Da	B1	Load Rating C [daN]
KTS-40x1,5.42	37,2	39,9	9,0	120
KTS-50x1,5.42	47,3	49,9	7,5	80
KTS-50x2,0.42	46,3	49,9	7,5	80
KTS-50x2,8.42	44,6	49,9	7,5	80
KTS-60x1,5.42	57,3	59,9	7,5	80
KTS-60x2,0.42	56,3	59,9	7,5	80
Other dimensions on request!				

- 🔧 Housing: Plastic
- 🔧 Single Labyrinth Seal: Plastic
- 🔧 Bearing 6002

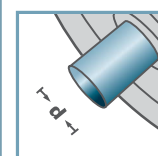
Please note: the single labyrinth seal for axis 15 mm is delivered separately and has to be locked at assembly.



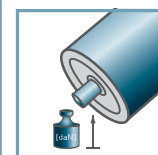
KTS-42



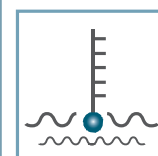
D [mm]
40 - 60



d [mm]
10; 12; 15; SW11



C [daN]
80; 120



T [°C]
0° - 80°



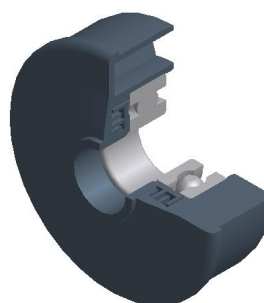
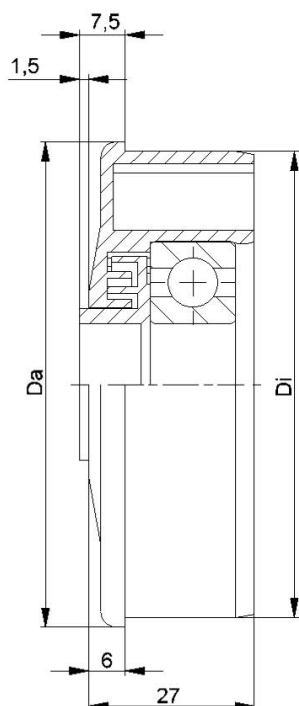
EP 2



Carton [pcs.]

ø40: -
ø50: 250
ø60: 200

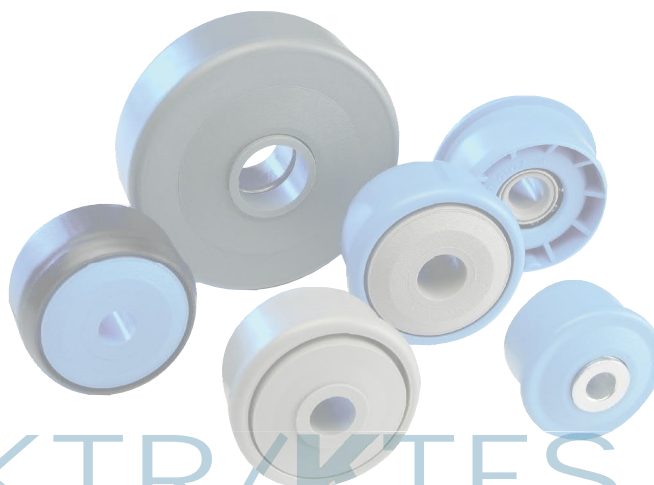
KTS/KTR/KTES



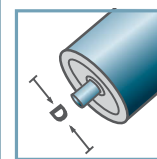
KTR-43/44			
Type	Di +0,2	Da	Load Rating C [daN]
KTR-63,5x2,9.43/.44	58,0	63,4	150
KTR-80x2,0.43/.44	76,4	79,9	150

Other dimensions on request!

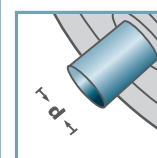
- Housing: Plastic
- Multiple Labyrinth Seal: Plastic
- Bearing 6303/6204



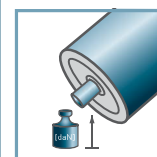
KTR-43/44



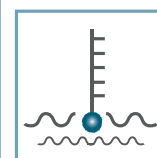
D [mm]
63,5 - 80



d [mm]
6303: 17
6204: 20



C [daN]
150



T [°C]
0° - 80°



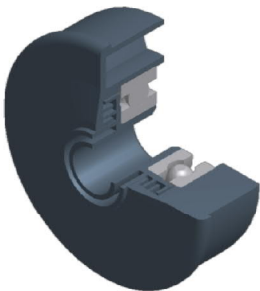
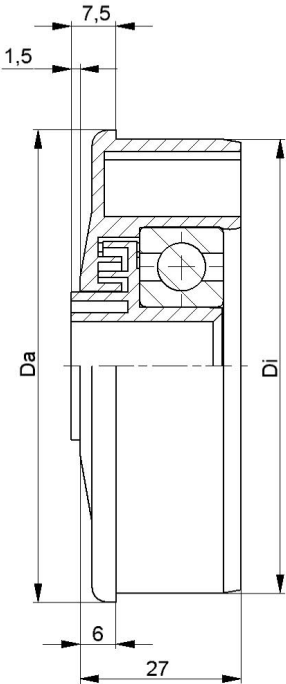
EP 2



Carton [pcs.]

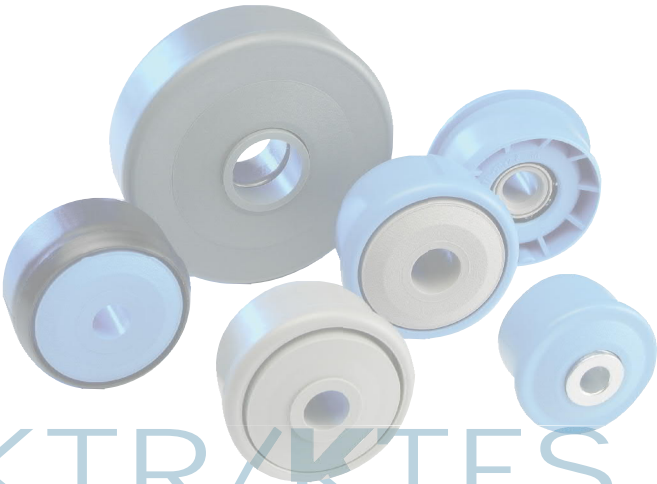
100

KTS/KTR/KTES

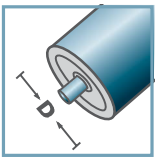


KTR-44			
Type	Di +0,2	Da	Load Rating C [daN]
KTR-63,5x2,9.44	58,0	63,4	150
KTR-80x2,0.44	76,4	79,9	150
Other dimensions on request!			

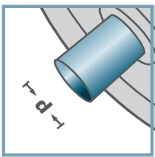
- ⚙ Housing: Plastic
- ⚙ Multiple Labyrinth Seal: Plastic
- ⚙ Bearing 6303/6204



KTR-44



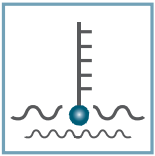
D [mm]
63,5 - 80



d [mm]
15



C [daN]
150



T [°C]
0° - 80°



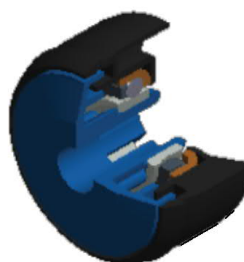
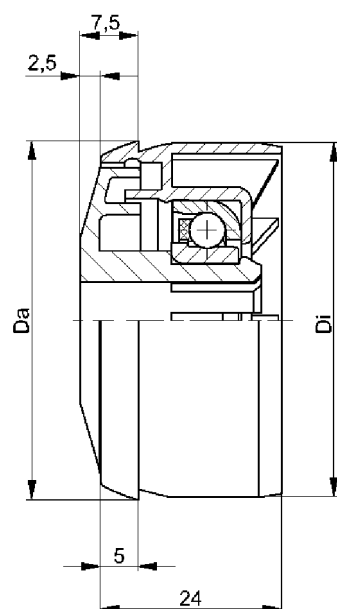
EP 2



Carton [pcs.]

100

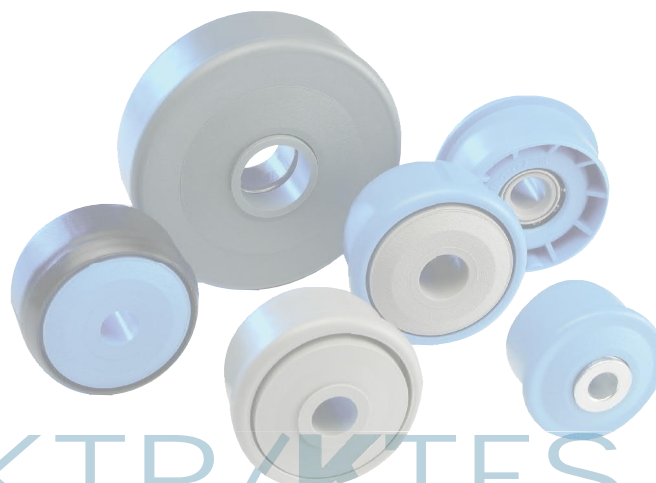
KTS/KTR/KTES



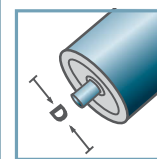
KTES-30			
Type	Di +0,3	Da	Load Rating C [daN]
KTES-50x1,5.30	47,1	47,9	80
Other dimensions on request!			

- 🔧 Housing: Plastic
- 🔧 Single Labyrinth Seal: Plastic
- 🔧 Bearing RL-30
 - 🔧 Bearing Shell: Steel, Hardened
 - 🔧 Inner Race: Steel, Hardened
 - 🔧 Cage: Plastic
 - 🔧 Ball: Steel

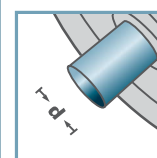
Please note: the single labyrinth seal for axis 15 mm is delivered separately and has to be locked at assembly.



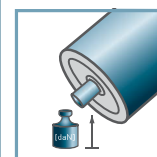
KTES-30



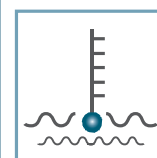
D [mm]
50



d [mm]
10; 12; 15; SW11



C [daN]
80



T [°C]
0° - 80°



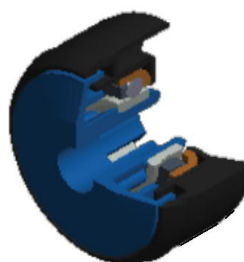
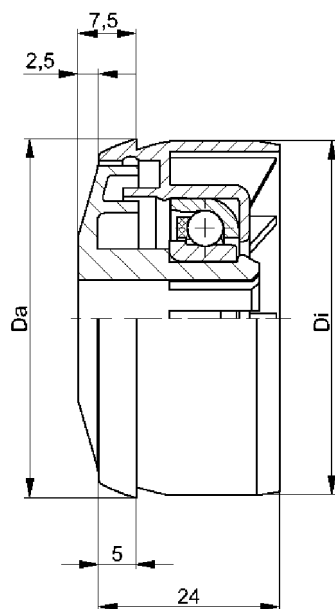
Oil



Carton [pcs.]

250

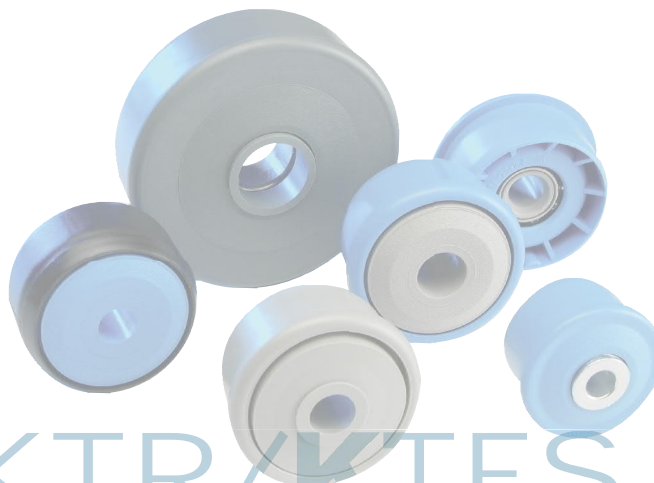
KTS/KTR/KTES



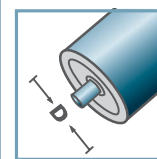
KTES-31			
Type	Di +0,3	Da	Load Rating C [daN]
KTES-50x1,5.31	47,1	47,9	25
Other dimensions on request!			

- Housing: Plastic
- Single Labyrinth Seal: Plastic
- Bearing RL-31
 - Bearing Shell: 1.4301
 - Inner Race: 1.4305
 - Cage: Plastic
 - Ball: 1.4301

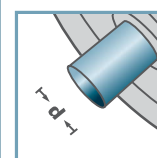
Please note: the single labyrinth seal for axis 15 mm is delivered separately and has to be locked at assembly.



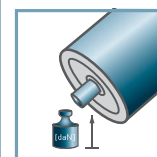
KTES-31



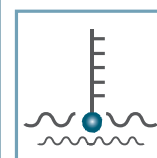
D [mm]
50



d [mm]
10; 12; 15; SW11



C [daN]
25



T [°C]
0° - 80°



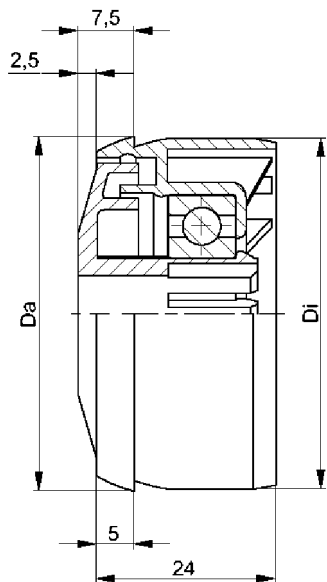
Oil



Carton [pcs.]

250

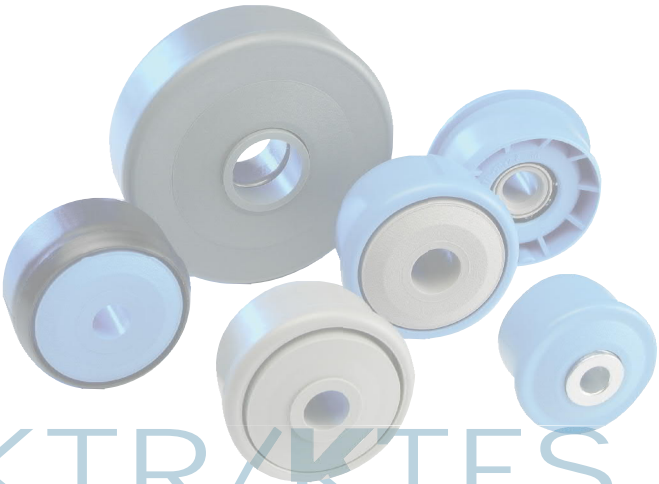
KTS/KTR/KTES



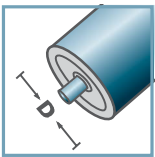
KTES-42			
Type	Di +0,3	Da	Load Rating C [daN]
KTES-50x15.42	47,1	47,9	80
Other dimensions on request!			

- ⚙ Housing: Plastic
- ⚙ Single Labyrinth Seal: Plastic
- ⚙ Bearing 6002

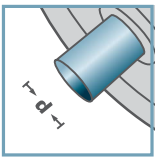
Please note: the single labyrinth seal for axis 15 mm is delivered separately and has to be locked at assembly.



KTES-42



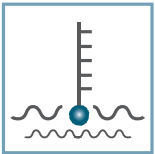
D [mm]
50



d [mm]
10; 12; 15; SW11



C [daN]
80



T [°C]
0° - 80°

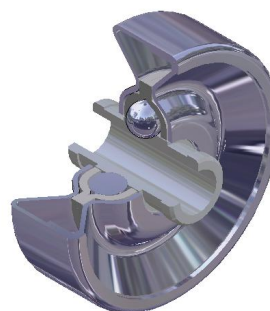
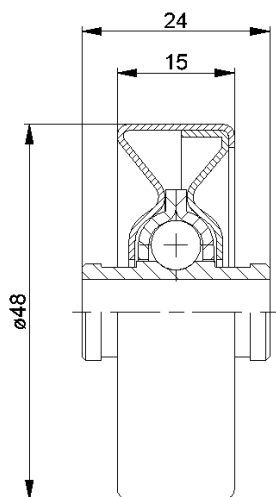


EP 2



Carton [pcs.]
250

KTS/KTR/KTES



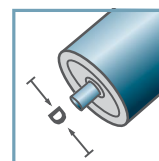
SLR	
Typ	Tragzahl C [daN]
SLR-480	20

Weitere Varianten auf Anfrage!

- Außenschalen: Stahl, verzinkt
- Lagerschale: Stahl, gehärtet
- Nabe: Stahl, gehärtet, verzinkt
- Kugel: Stahl

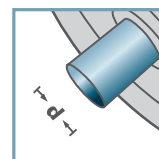


SLR-



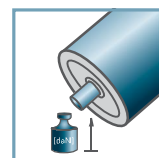
D [mm]

-



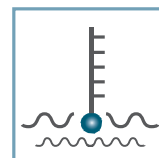
d [mm]

6; 8



C [daN]

20



T [°C]

-30° - 140°



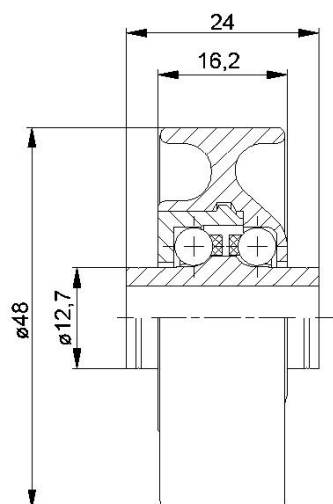
-



Karton [Stck.]

250

KLR/SLR/SR



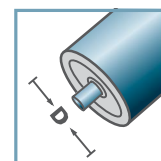
KLR-02/03			
Typ	Normal	Niro	Tragzahl C [daN]
KLR-480	x	x	15

Weitere Varianten auf Anfrage!

- Radkörper: Kunststoff
- Nabe: Kunststoff
- Lagerdeckel: Kunststoff
- Käfig: Kunststoff
- Kugel
 - 02: Stahl
 - 03: 1.4034

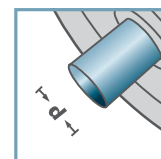


KLR-02
KLR-03

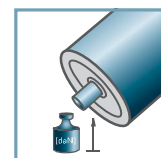


D [mm]

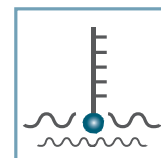
-



d [mm]
6; 8



C [daN]
15



T [°C]
0° - 80°



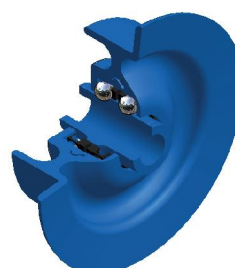
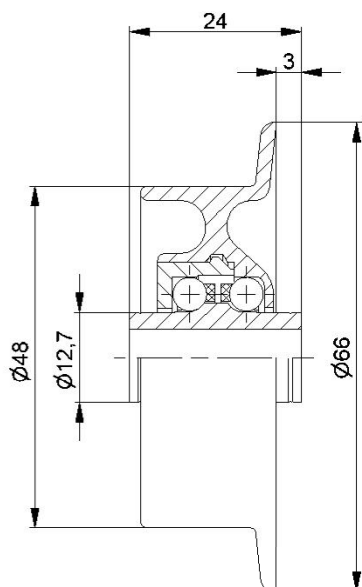
-



Karton [Stck.]

250

KLR/SLR/SR



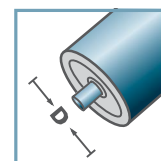
SR-02/03			
Typ	Normal	Niro	Tragzahl C [daN]
SR-480	x	x	10

Weitere Varianten auf Anfrage!

- Radkörper: Kunststoff
- Nabe: Kunststoff
- Lagerdeckel: Kunststoff
- Käfig: Kunststoff
- Kugel
 - 02: Stahl
 - 03: 1.4034

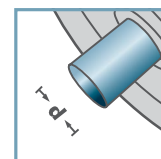


SR-02
SR-03

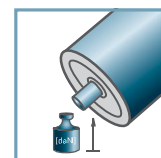


D [mm]

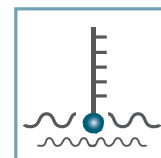
-



d [mm]
6; 8



C [daN]
15



T [°C]
0° - 80°



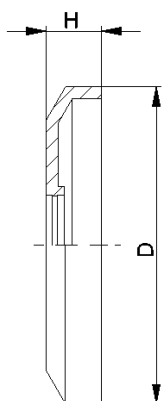
-



Karton [Stck.]

250

KLR/SLR/SR



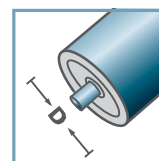
DK-KLR		
Typ	D	H
DK-KLR-02	40,5	7

Weitere Varianten auf Anfrage!

 Dichtkappe: Kunststoff

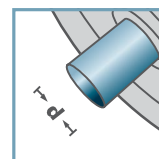


DK-KLR-02



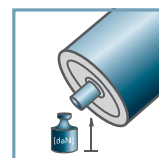
D [mm]

-



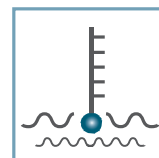
d [mm]

-



C [daN]

-



T [°C]

0° - 80°



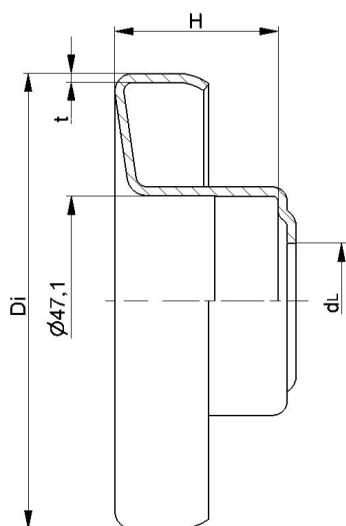
-



Karton [Stck.]

-

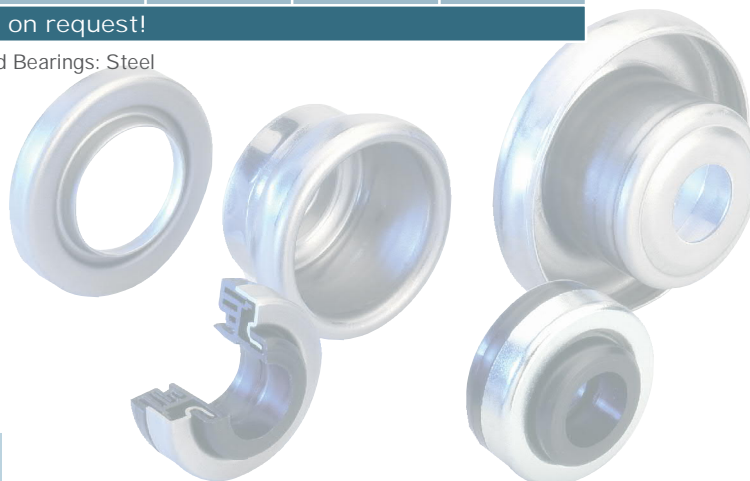
KLR/SLR/SR



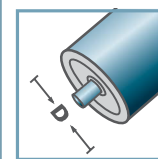
LH-6204				
Type	Di	H	dL	t
LH-63,5x1,75/6204	60,5	33	26	1,5
LH-63,5x2,9/6204	58,2	33	26	1,5
LH-80x2,0/6204	76,5	36,5	26	2,0
LH-80x3,0/6204	74,5	36,5	26	2,0
LH-89x3,0/6204	83,5	36,5	26	2,0
LH-108x2,5/6204	103,3	36,5	26	2,0
LH-108x2,9/6204	102,8	36,5	26	2,0
LH-108x3,25/6204	102,1	36,5	26	2,0
LH-133x3,6/6204	126,3	36,5	26	2,5

Other dimensions on request!

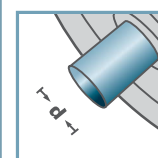
Retainer for Standard Bearings: Steel



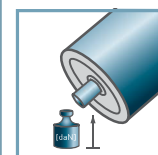
LH-6204



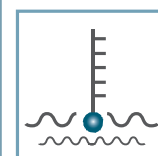
D [mm]
63,5 - 133



d [mm]
20



C [daN]
-



T [°C]
-

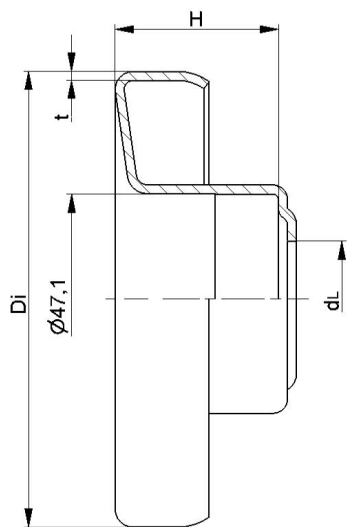


6204:
D47, d20, H14



Skeleton
Container [pcs.]
ø63,5: 6000
ø80: 3500
ø89: 3100
ø108: 2000
ø133: 1150

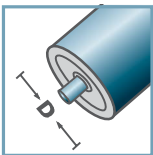
LH/FL



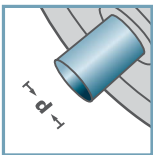
LH-6204 N				
Type	Di	H	dL	t
LH-63,5x1,75/6204N	60,5	31,8	21	1,5
LH-89x3,0/6204N *	83,7	33,5	21	1,5
LH-108x3,25/6204N	102,1	36,5	21	2,0
Other dimensions on request!				

- Retainer for Standard Bearings: Steel
- *Alternative: Stainless

LH-6204 N



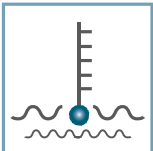
D [mm]
63,5 - 108



d [mm]
20



C [daN]
-



T [°C]
-

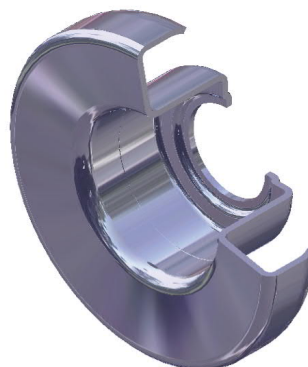
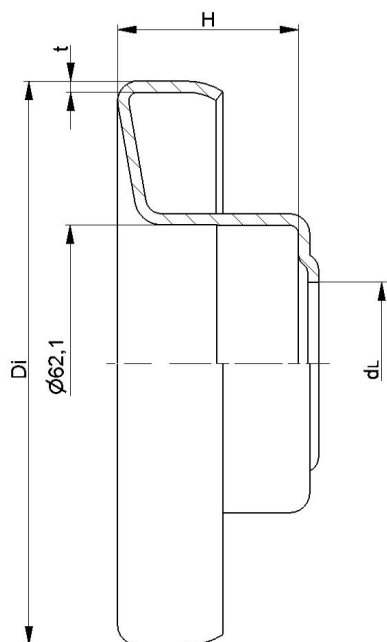


6204:
D47, d20, H14

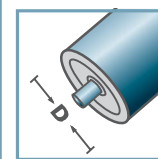


Skeleton
Container [pcs.]
ø63,5: 6000
ø89: 3100/3350
ø108: 2000

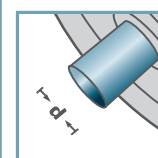
LH/FL



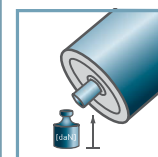
LH-6305



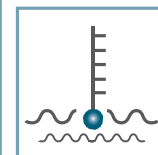
D [mm]
89 - 159



d [mm]
25



C [daN]
-



T [°C]
-



6305:
D62, d25, H17

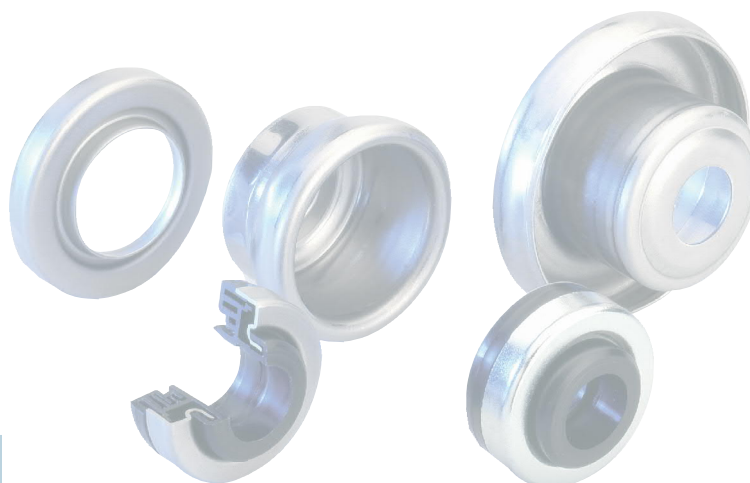


Skeleton
Container [pcs.]
ø89: 2600
ø108: 1900
ø133: 1150

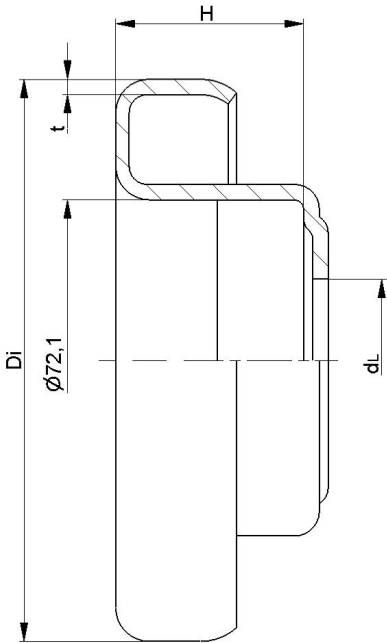
LH-6305				
Type	Di	H	dL	t
LH-89x3,0/6305	83,5	40,5	36,5	2,0
LH-108x2,5/6305	103,3	40,5	36,5	2,0
LH-108x3,25/6305	102,1	40,5	36,5	2,0
LH-127x2,9/6305	121,7	40,5	36,5	2,5
LH-133x3,6/6305	126,3	40,5	36,5	2,5
LH-159x4,5/6305	150,5	40,5	36,5	2,5

Other dimensions on request!

Retainer for Standard Bearings: Steel

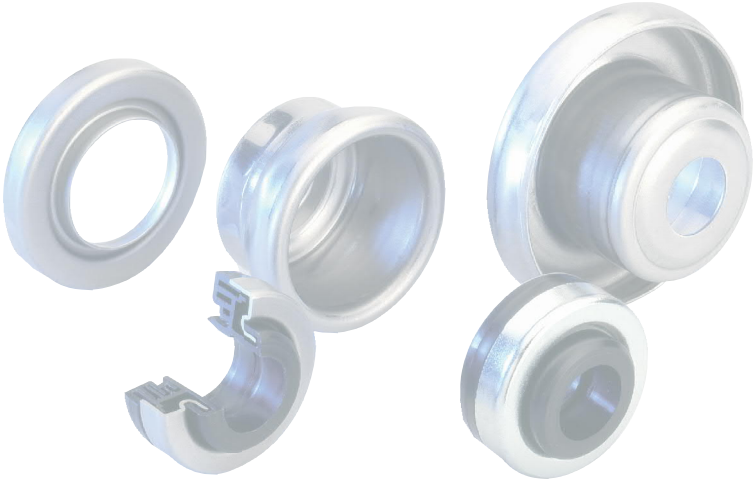


LH/FL

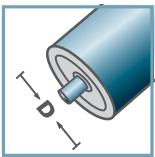


LH-6306				
Type	Di	H	dL	t
LH-108x3,25/6306	102,1	42	36,5	3,0
LH-133x3,6/6306	126,3	42	36,5	3,5
LH-159x4,5/6306	150,5	42	36,5	2,5
Other dimensions on request!				

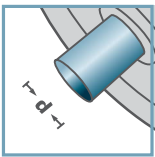
Retainer for Standard Bearings: Steel



LH-6306



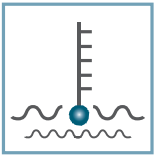
D [mm]
108 - 159



d [mm]
30



C [daN]
-



T [°C]
-



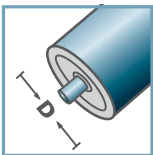
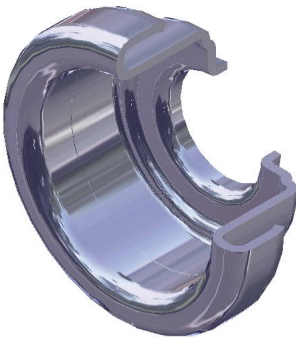
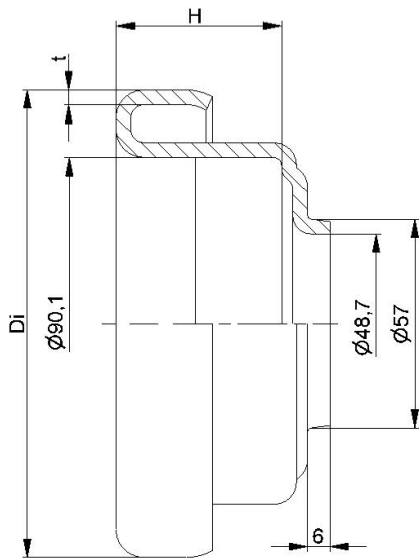
6306:
D72, d30, H19



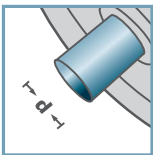
Skeleton
Container [pcs.]
Ø108: 1700
Ø133: 1000

LH/FL

LH-6308



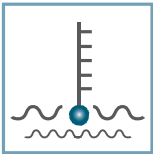
D [mm]
133 - 159



d [mm]
40



C [daN]
-



T [°C]
-



6308:
D90, d40, H23

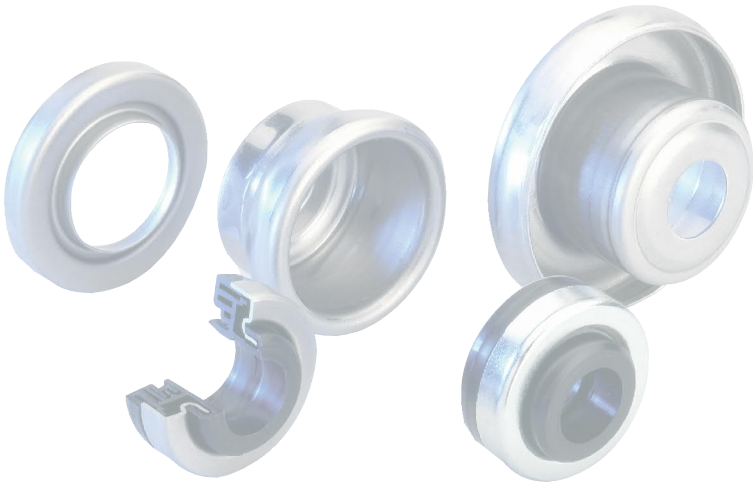


Skeleton
Container [pcs.]
ø133: 800
ø159: 600

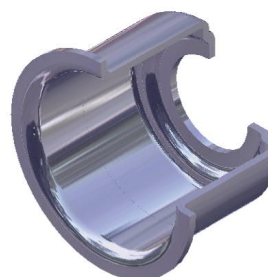
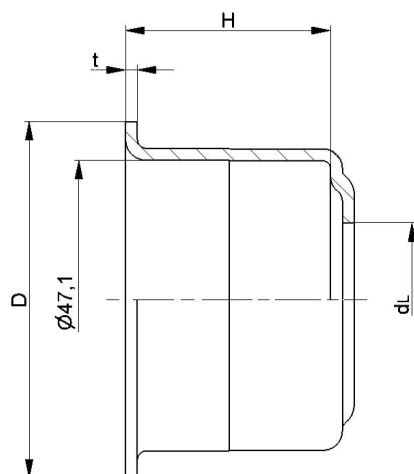
LH-6308			
Type	Di	H	t
LH-133x3,6/6308	126,3	44,6	4,0
LH-159x4,5/6308	150,8	44,6	4,0

Other dimensions on request!

Retainer for Standard Bearings: Steel



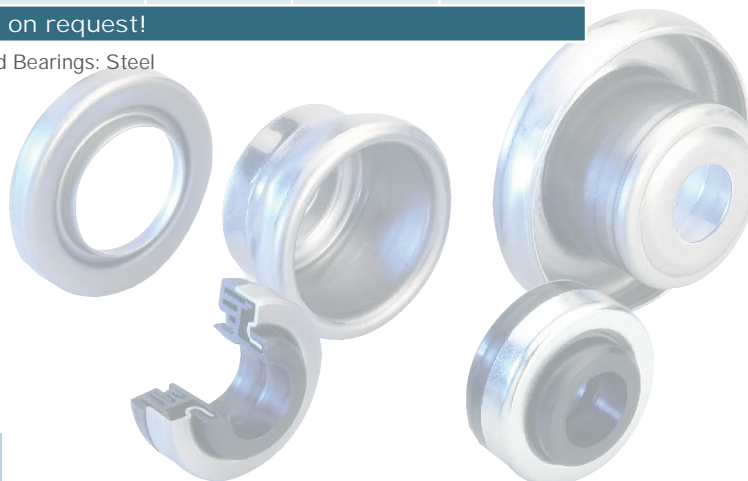
LH/FL



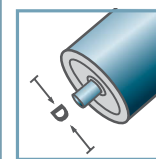
FL-6204				
Type	D	H	dL	t
FL-60x3,0/6204	58	34	26	2,0
FL-63,5x2,9/6204	60,2	34,5	26	2,0
FL-70/6204	67,4	36,5	26	2,0
FL-76/6204	73,5	36,5	26	2,0
FL-80/6204	77	36,5	26	2,0
FL-89/6204	86	36,5	26	2,0
FL-89/6204	86	36,5	26	2,5
FL-102/6204	99	36,5	26	2,5
FL-108/6204	104,5	36,5	26	2,5

Other dimensions on request!

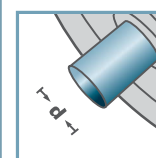
Retainer for Standard Bearings: Steel



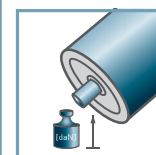
FL-6204



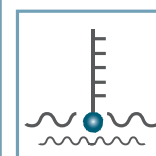
D [mm]
60 - 108



d [mm]
20



C [daN]
-



T [°C]
-



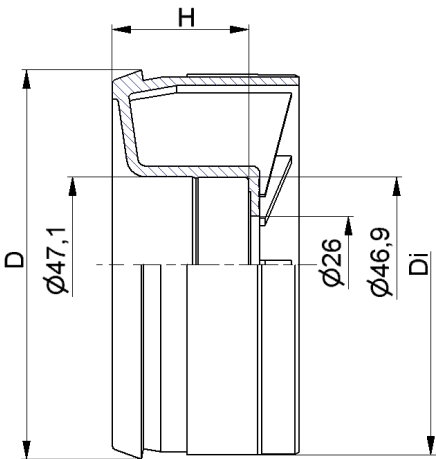
6204:
D47, d20, H14



Skeleton
Container [pcs]

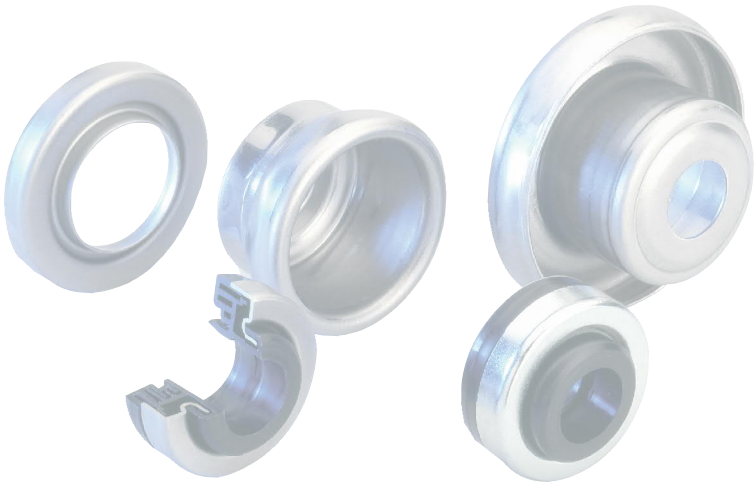
ø60:	6000
ø63,5:	5000
ø70:	4500
ø76:	4000
ø80:	3500
ø89:	3000
ø102/108	2000

LH/FL

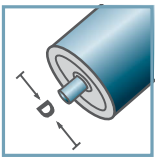


KLH-6204			
Type	Di	H	D
KLH-89x3,0/6204	83,2	36,5	85,3
KLH-108x3,0/6204	102,2	36,5	104,3
Other dimensions on request!			

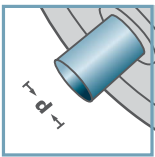
Retainer for Standard Bearings: Plastic



KLH-6204



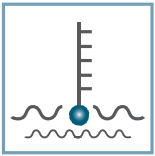
D [mm]
89 - 108



d [mm]
20



C [daN]
-



T [°C]
100°

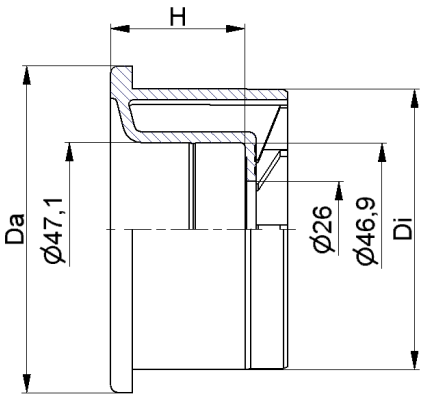


6204:
D47, d20, H14



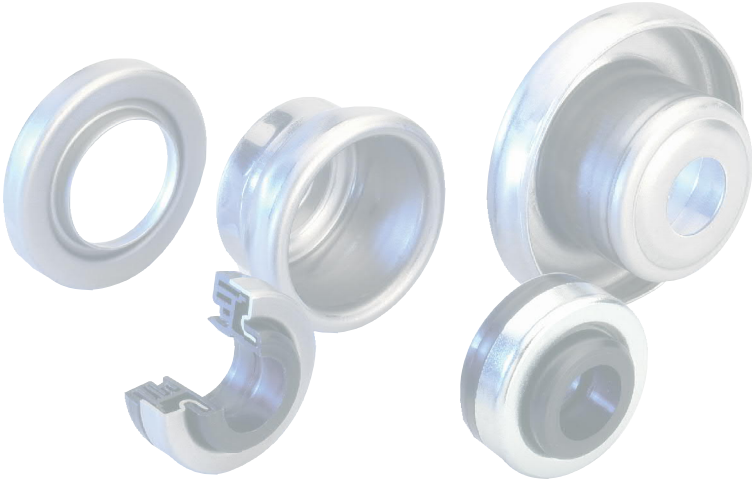
Skeleton
Container [pcs.]
1000

LH/FL

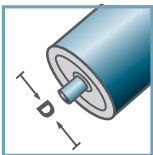


KLH-6204			
Type	Da	Di	H
KLH-90x7,0/6204	88,8	76,3	36,5
Other dimensions on request!			

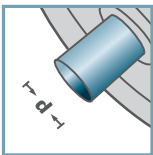
Retainer for Standard Bearings: Plastic



KLH-6204



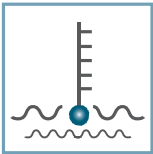
D [mm]
90



d [mm]
20



C [daN]
-



T [°C]
100°

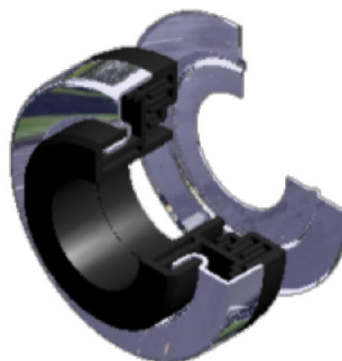
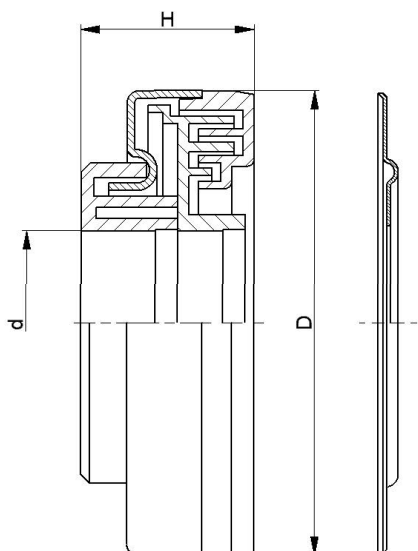


6204:
D47, d20, H14



Skeleton
Container [pcs.]
1000

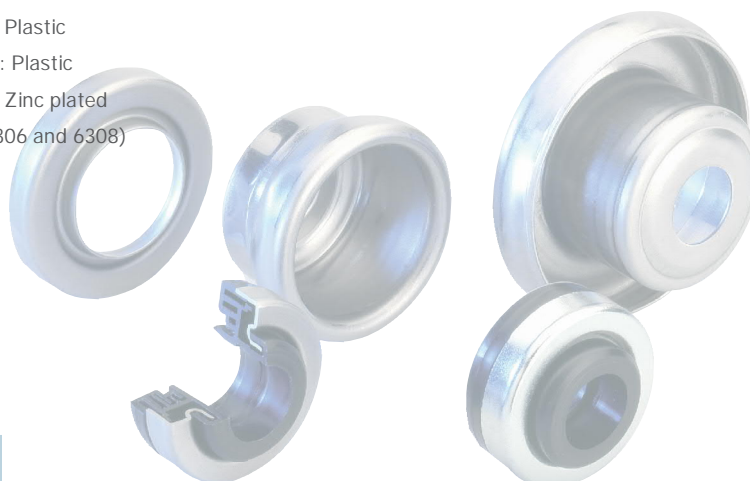
LH/FL



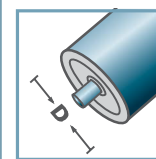
LH-			
Type	D	H	d
LH-6303	47	22,5	17
LH-6204	47	22,5	20
LH-6305	62	23,5	25
LH-6206	62	23,5	30
LH-6306	72	24,5	30
LH-6308	90	23,1	40

Other dimensions on request!

- Seal Bonnet: Steel, Zinc plated
- Rain Cap: Plastic
- Inner Labyrinth Seal: Plastic
- Outer Labyrinth Seal: Plastic
- Sheet Gasket: Steel, Zinc plated
(not available with 6306 and 6308)

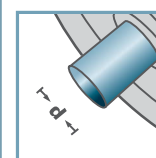


LH-

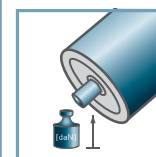


D [mm]

-

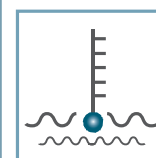


d [mm]
17 - 40



C [daN]

-



T [°C]
0° - 80°



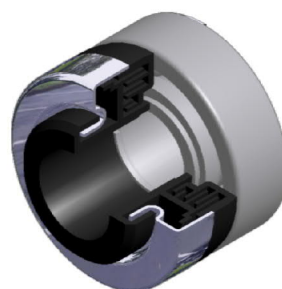
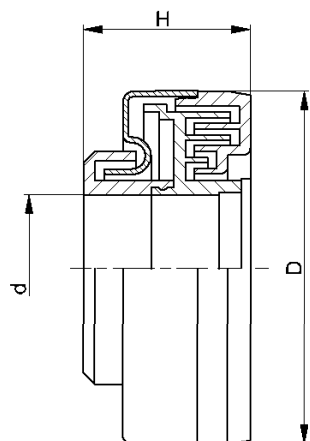
-



Carton [pcs.]

6204: 500
6305: 500

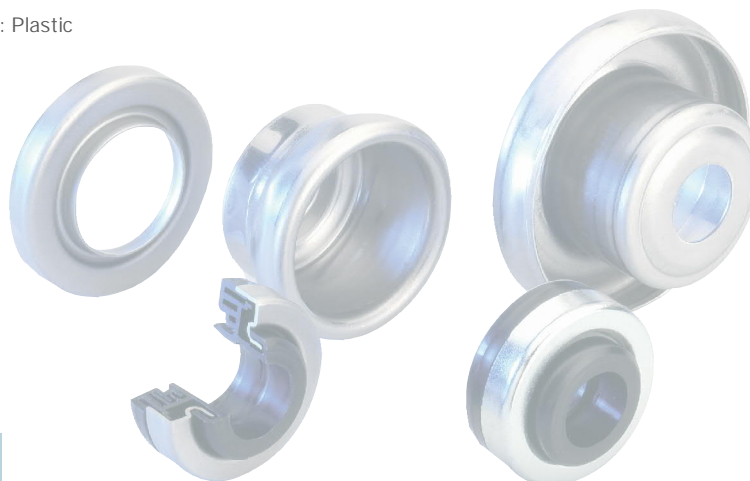
LH/FL



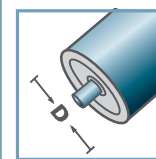
LH- mounted, greased			
Type	D	H	d
LH-6303 M	47	22,5	17
LH-6204 M	47	22,5	20
LH-6204N M	47	20,0	20
LH-6305 M	62	23,5	25
LH-6308 M	90	23,1	40

Other dimensions on request!

- Seal Bonnet: Steel, Zinc plated
- Rain Cap: Plastic
- Inner Labyrinth Seal: Plastic
- Outer Labyrinth Seal: Plastic
- Grease: EP2

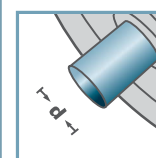


LH-

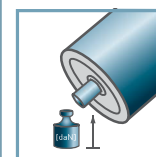


D [mm]

-

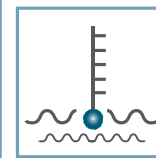


d [mm]
17, 20



C [daN]

-



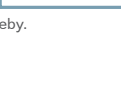
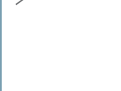
T [°C]
0° - 80°



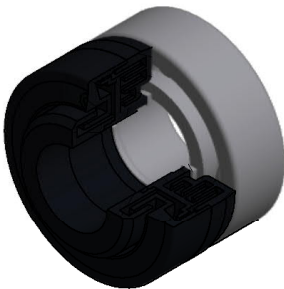
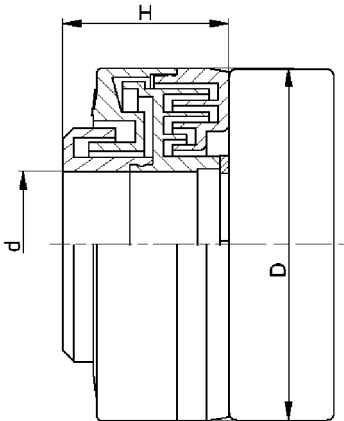
-



Carton [pcs.]

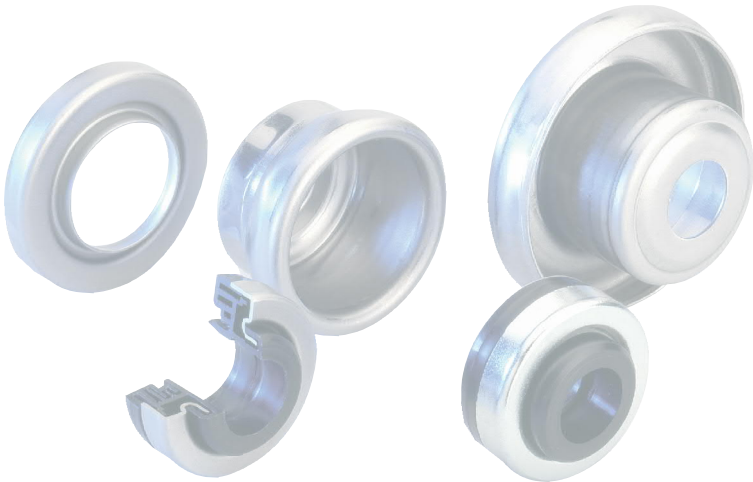


LH/FL

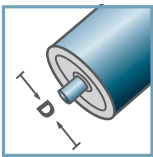


LH-			
Type	D	H	d
LH-6303 KU	47	22,5	17
LH-6204 KU	47	22,5	20
Other dimensions on request!			

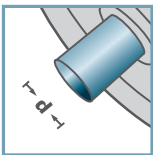
- Seal Bonnet: Plastic
- Rain Cap: Plastic
- Inner Labyrinth Seal: Plastic
- Outer Labyrinth Seal: Plastic



LH-



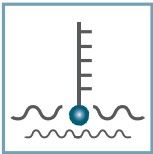
D [mm]
-



d [mm]
20



C [daN]
-



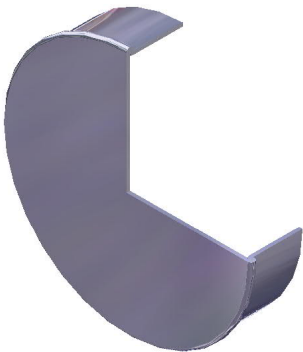
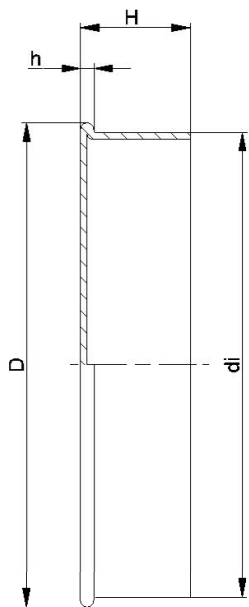
T [°C]
0° - 80°



Carton [pcs.]

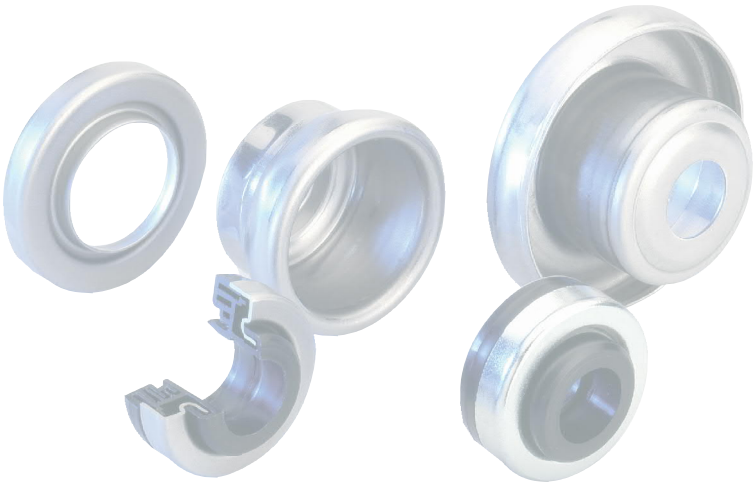


LH/FL

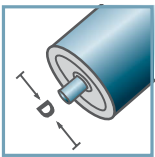


LH- closed				
Type	D	di	H	h
LH-6204	50	47,4	14,7	1,8
Other dimensions on request!				

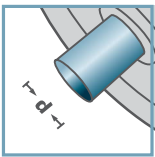
Seal Bonnet: Steel



LH-



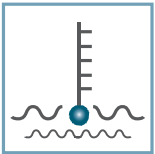
D [mm]
-



d [mm]
-



C [daN]
-



T [°C]
-



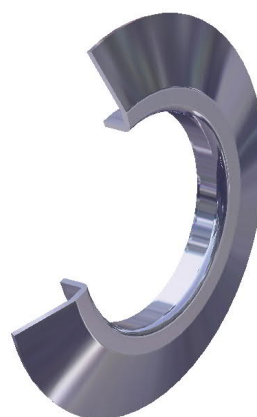
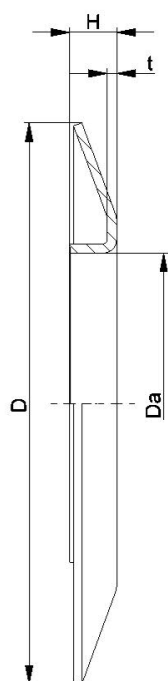
-



Carton [pcs.]

ST-6204	125
ST-6305	100
ST-6306	100

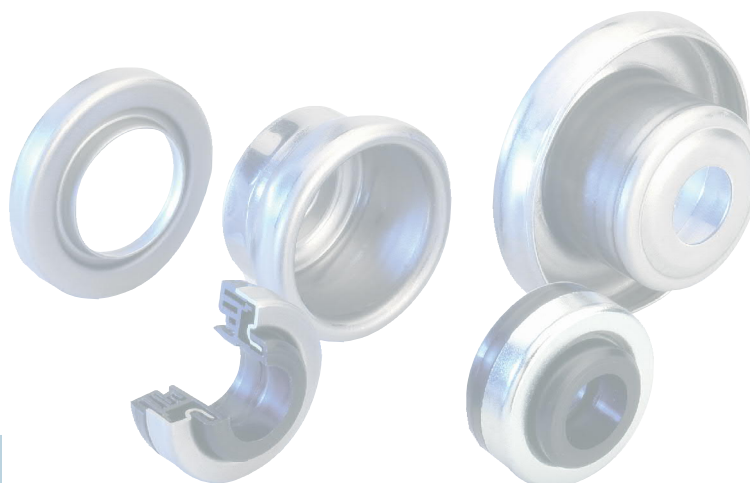
LH/FL



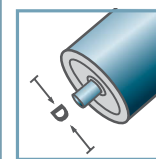
BS-				
Type	Da ± 0.1	D -2	H ± 0.5	t
BS-50-130	49,9	130	10	1,5
BS-60-130	59,9	130	10	1,5
BS-80-150	79,9	150	14	2,5
BS-89-150	88,9	150	14	2,5
BS-108-150	107,9	150	14	2,5

Other dimensions on request!

Wheel Flange: Steel

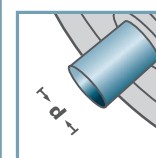


BS-



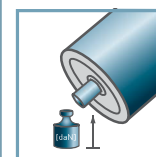
D [mm]

-



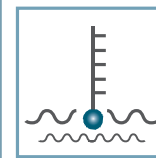
d [mm]

-



C [daN]

-



T [°C]

-



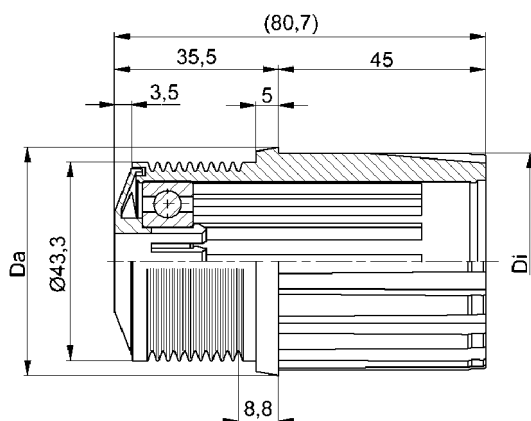
-



Carton [pcs.]

25

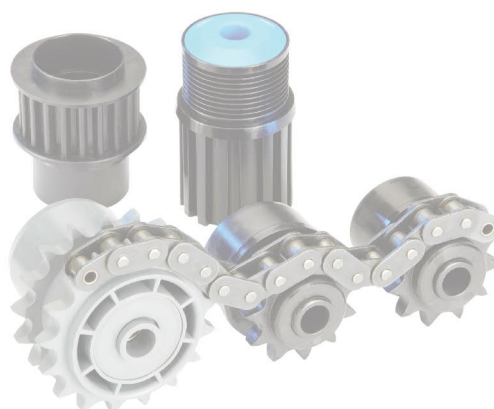
LH/FL



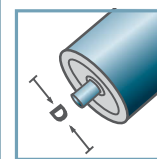
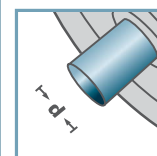
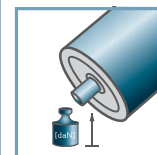
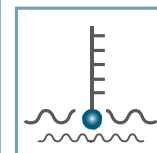
V-Belt Drive PJ VRS-

Type	Di	Da	Load Rating C [daN]
50x1,5.40	47,3	49,5	80

- ⚙ Housing: Plastic
- ⚙ Single Labyrinth Seal: Plastic
- ⚙ Bearing 6202
also with two bearings available



VRS-40

D [mm]
50d [mm]
12C [daN]
80T [°C]
0° - 80°

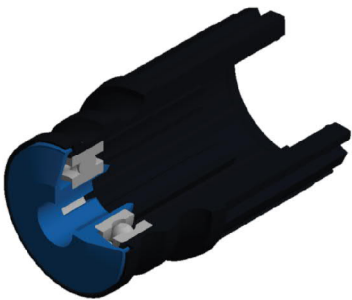
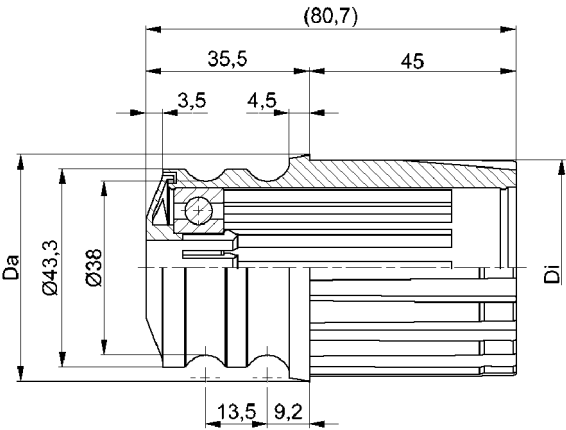
EP 2



Carton [pcs.]

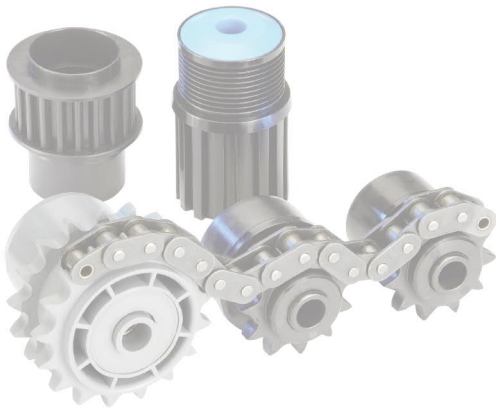
100

Plastic VR-Belt Drive

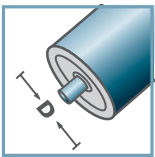


Round Belt Drive RRS-			
Type	Di	Da	Load Rating C [daN]
50x1,5.40	47,3	49,5	80

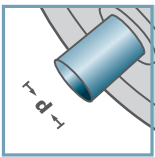
- ⚙ Housing: Plastic
- ⚙ Single Labyrinth Seal: Plastic
- ⚙ Bearing 6202
also with two bearings available



RRS-40



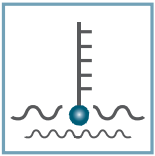
D [mm]
50



d [mm]
12



C [daN]
80



T [°C]
0° - 80°



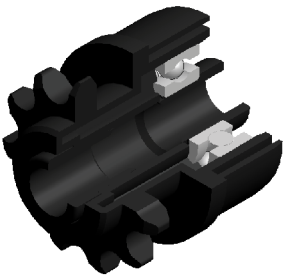
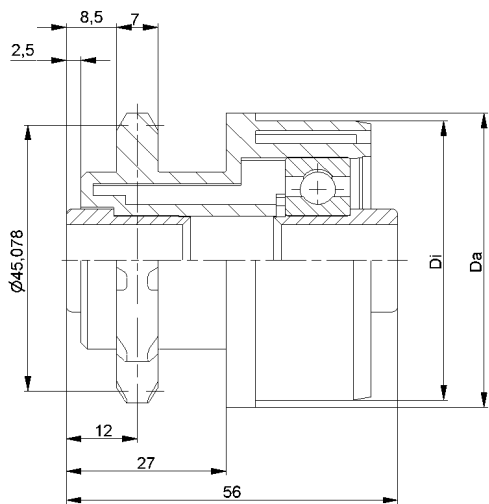
EP 2



Carton [pcs.]

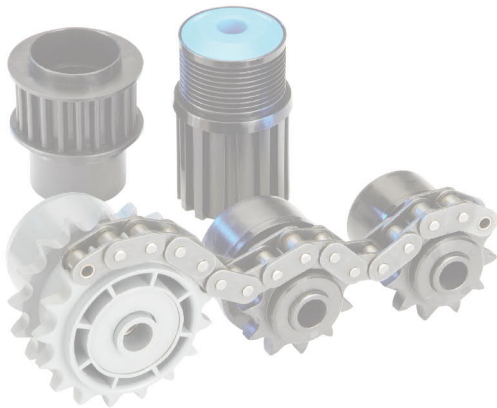
100

Plastic Belt Drive

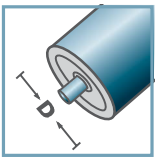


KKR-1/2"x5/16"-Z11 for fix driving		
Type	Di +0,2	Da
50x1,5.40	47,3	49,9
50x2,8.40	44,6	49,9
Other dimensions on request!		

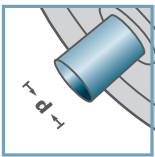
- ⚙ Housing: Plastic
- ⚙ Reducing Bush: Plastic
- ⚙ Bearing 6202



KKR-40



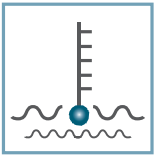
D [mm]
50



d [mm]
12



C [daN]
-



T [°C]
0° - 80°



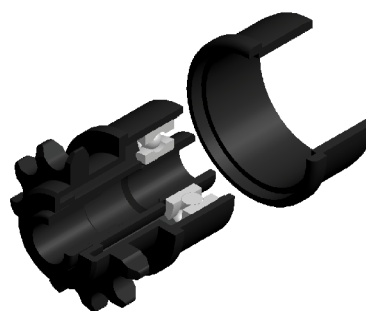
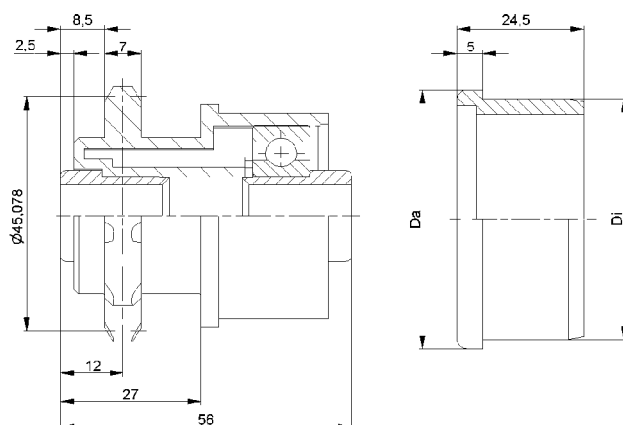
EP 2



Carton [pcs.]

150

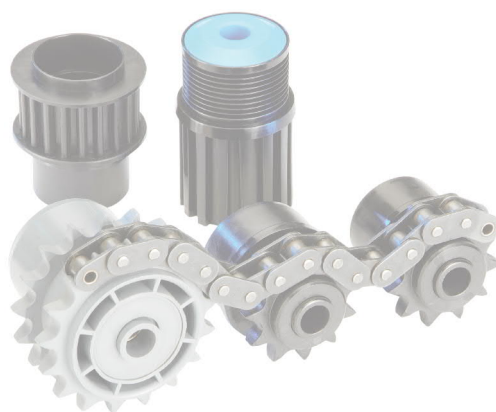
Plastic Sprocket Wheel


KKR-1/2"x5/16"-Z11 for friction driving

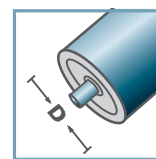
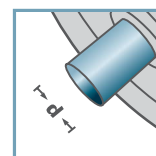
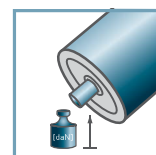
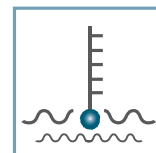
Type	Di +0,2	Da
50x1,5.40 ST	47,3	49,9

Other dimensions on request!

- 🔧 Housing: Plastic
- 🔧 Reducing Bush: Plastic
- 🔧 Sliding Ring: Plastic
- 🔧 Bearing 6202



KKR-40


 D [mm]
50

 d [mm]
12

 C [daN]
-

 T [°C]
0° - 80°

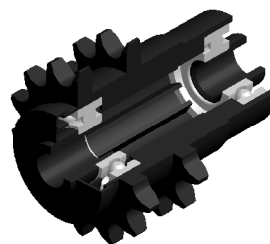
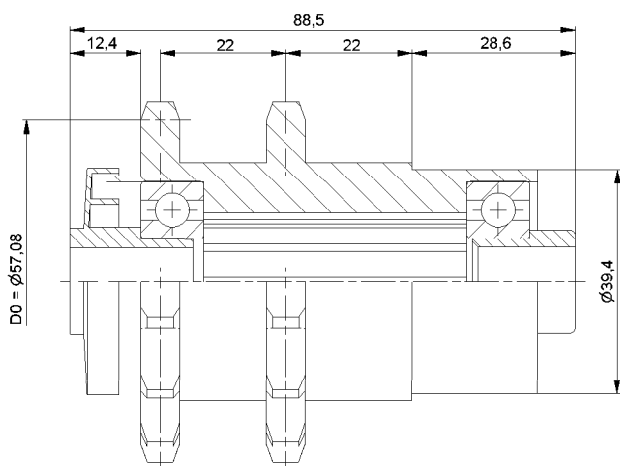

EP 2



Carton [pcs.]

 Housing:
150
Sliding Ring:
300

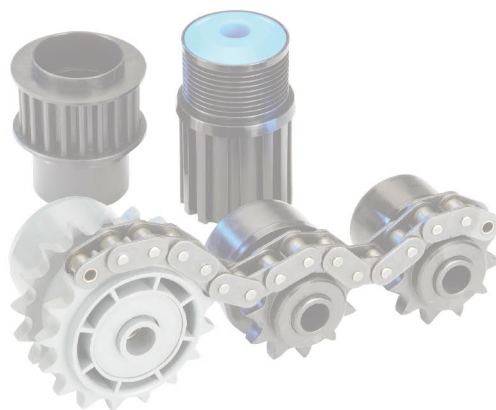
Plastic Sprocket Wheel



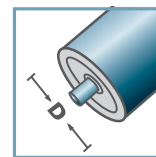
KKR-1/2"x5/16"-Z14

Other dimensions on request!

- ⚙ Housing: Plastic
- ⚙ Labyrinth Seal: Plastic
- ⚙ Reducing Bush: Plastic
- ⚙ Bearing 6202

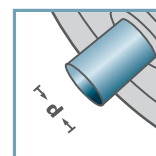


KKR-40



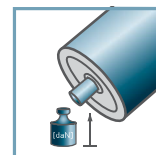
D [mm]

-



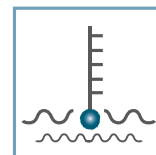
d [mm]

12



C [daN]

-



T [°C]

0° - 80°



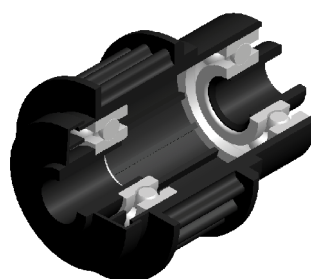
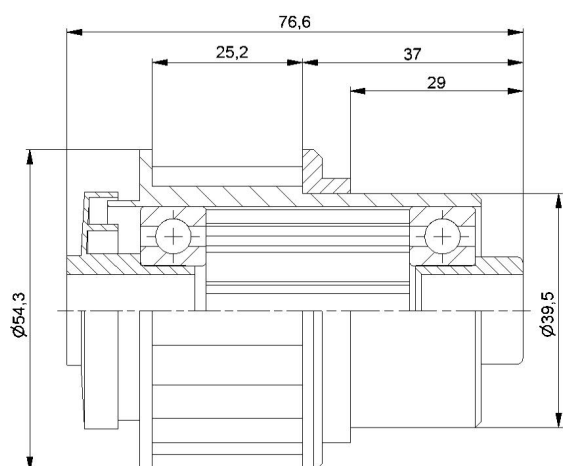
-



Carton [pcs.]

150

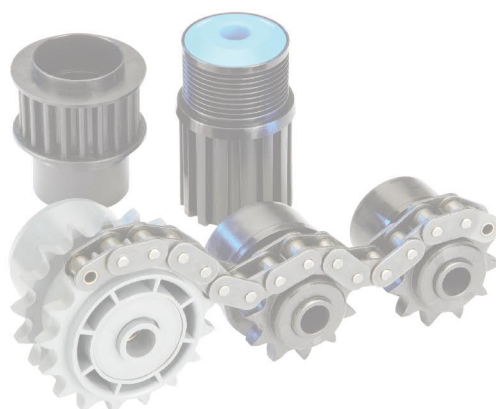
Plastic Sprocket Wheel



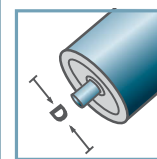
KZA-Z20.40

Other dimensions on request!

- ☛ Housing: Plastic
- ☛ Labyrinth Seal: Plastic
- ☛ Reducing Bush: Plastic
- ☛ Bearing 6202

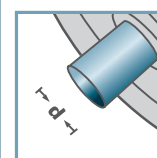


KZA-40



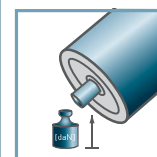
D [mm]

-



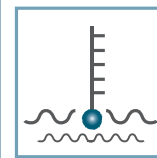
d [mm]

12



C [daN]

-



T [°C]

0° - 80°



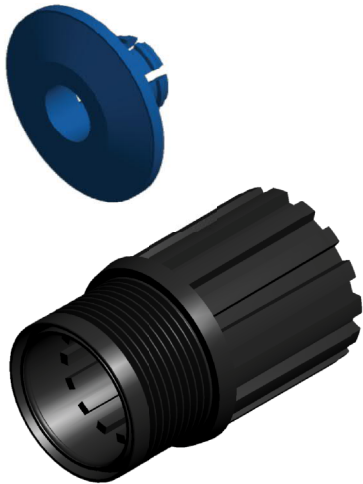
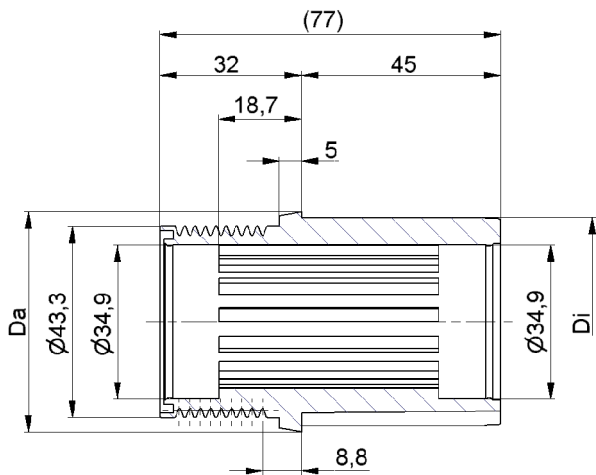
-




Carton [pcs.]

100

Plastic Synchronous Belt Drive

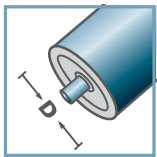


VR-		
Type	Di	Da
50x1,5.40	47,3	49,5

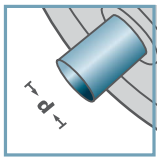
 Housing: Plastic



VR-40



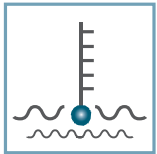
D [mm]
50



d [mm]
-



C [daN]
-



T [°C]
0° - 80°



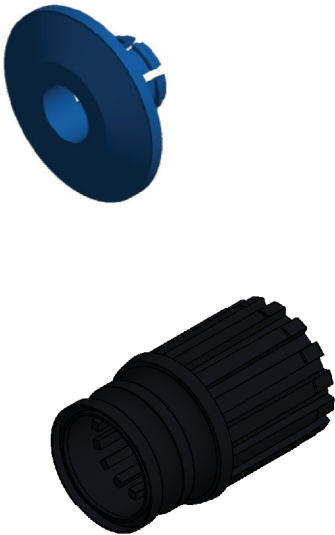
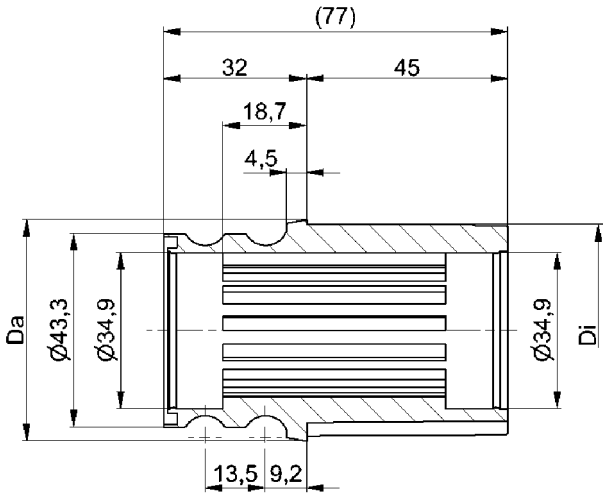
-




Carton [pcs.]

100

Plastic VR-Belt Drive Wheel

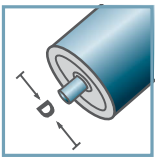


RR-		
Type	D_i	D_a
50x1,5.40	47,3	49,5

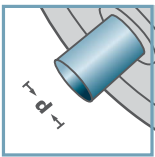
 Housing: Plastic



RR-40



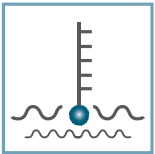
D [mm]
50



d [mm]
-



C [daN]
-



T [°C]
0° - 80°



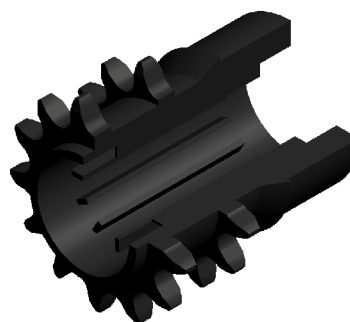
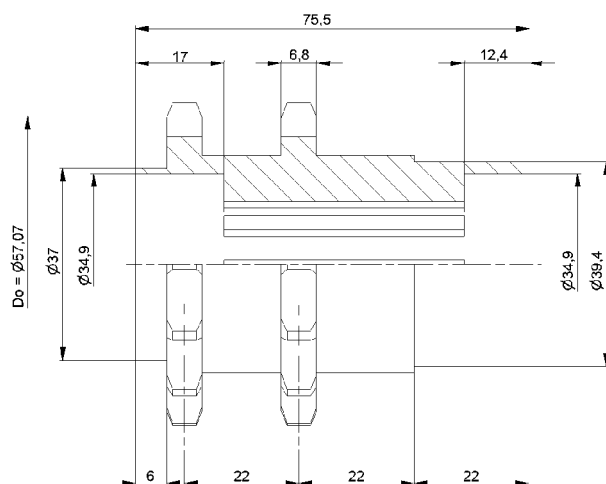
-



Carton [pcs.]

100

Plastic Belt Drive Wheel



KKR-1/2"x5/16"-Z14

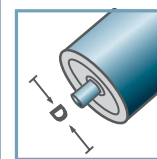
Other dimensions on request!

C Housing: Plastic



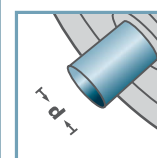
Plastic Sprocket Wheel

KKR-40



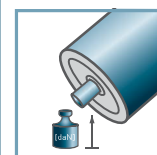
D [mm]

100



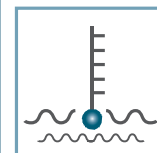
d [mm]

1



C [daN]

100

 $T [^{\circ}\text{C}]$

0° - 80°

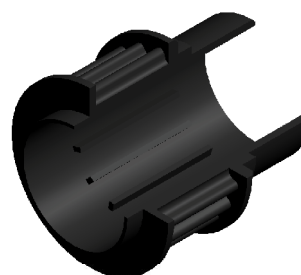
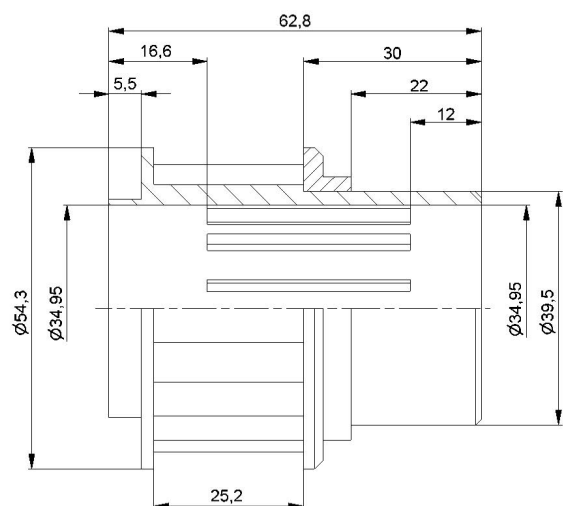


100




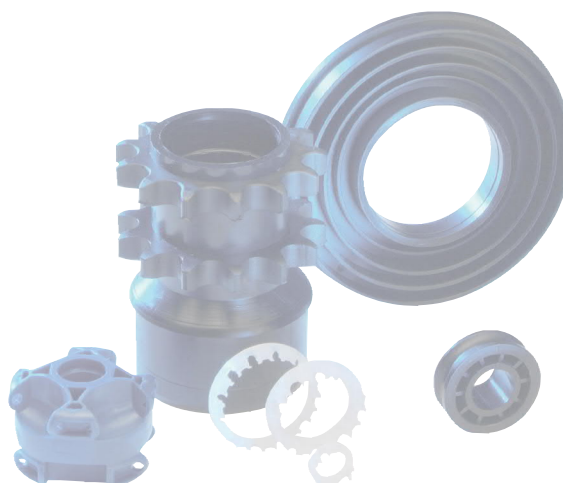
Carton [pcs.]

500

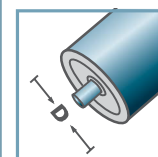


KZA-Z20.40

Other dimensions on request!

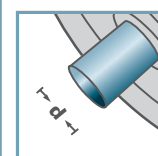
 Housing: Plastic


KZA-40



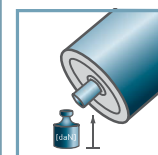
D [mm]

-



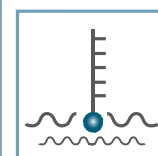
d [mm]

-



C [daN]

-

T [°C]
0° - 80°

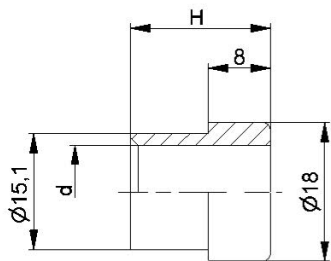
-



Carton [pcs.]

140

Plastic Synchronous Belt Drive

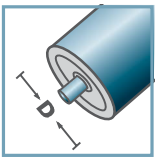


KKR-40		
	d	H
KKR-40	10	19
KKR-40	12	18
KKR-40	14	19
KKR-40	SW11	19
Other dimensions on request!		

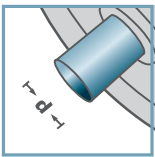
☛ Reducing Bush: Plastic



KKR-40



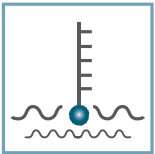
D [mm]
-



d [mm]
10; 12; 14; SW11



C [daN]
-



T [°C]
0° - 80°

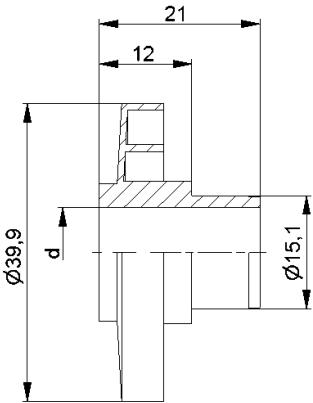


-



Carton [pcs.]
500/8000

Reducing Bush

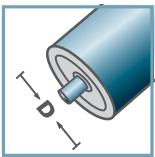


KKR-40	
Typ	d
KKR-40	10
KKR-40	12
KKR-40	14
KKR-40	SW11
Other dimensions on request!	

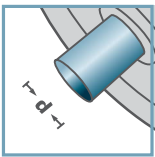
🔧 Labyrinth Seal: Plastic



KKR-40



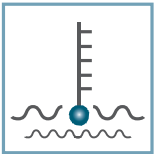
D [mm]
-



d [mm]
10; 12; 14; SW11



C [daN]
-



T [°C]
0° - 80°

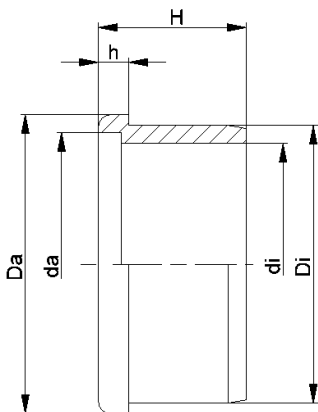


C [daN]
-



Carton [pcs.]
200/1000

Labyrinth Seal

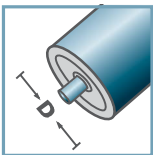


KKR-40						
Typ	Di	Da	di	da	H	h
50x1,5	47,25	50	39,3	42,6	25,2	5
50x2,8	44,7	50	39,3	42,6	25,2	5
60x1,5	57,3	60	47,0	50,7	25,5	5
60x2,0	56,3	60	47,0	50,7	25,5	5
Other dimensions on request!						

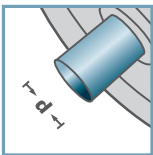
Distance Ring Fix: Plastic



KKR-40



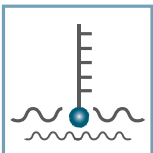
D [mm]
50 - 60



d [mm]
-



C [daN]
-



T [°C]
0° - 80°



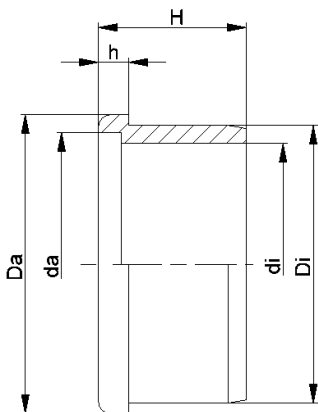
-



Carton [pcs.]

ø50: 400
ø60: 250

Distance Ring Fix

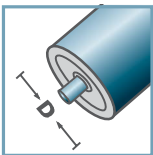


KKR-40						
Typ	Di	Da	di	da	H	h
50x1,5	47,2	50	40,6	44,6	25	5
Other dimensions on request!						

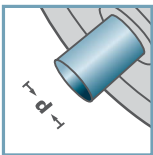
Distance Ring Friction: Plastic



KKR-40



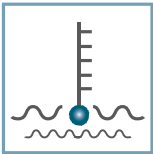
D [mm]
50 - 60



d [mm]
-



C [daN]
-



T [°C]
0° - 80°



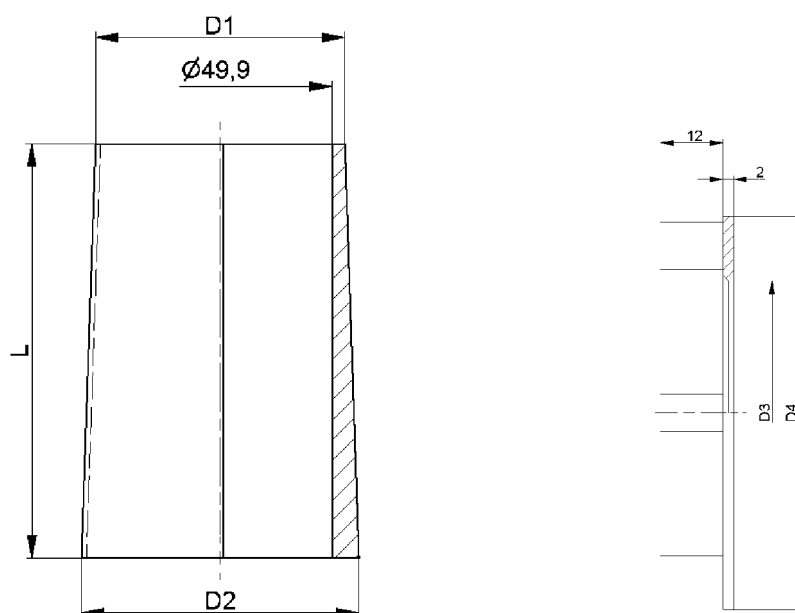
-



Carton [pcs.]

400

Distance Ring Friction



KF-50

Type A	D1	D2	L	D3	D4
KF-50 I-a Type A	53,4	59,7	92,5	-	-
KF-50 I-b Type A	54,0	59,7	95,5	-	-
KF-50 II Type A	60,0	66,5	100,0	-	-
KF-50 III Type A	66,5	73,0	99,0	-	-
KF-50 IV Type A	73,5	80,0	100,0	50,6	75,5
KF-50 V Type A	80,0	86,5	99,5	50,7	81,7
KF-50 VI Type A	86,5	93,5	100,0	50,6	87,7
KF-50 VII Type A	93,5	100,0	100,0	50,6	94,3
KF-50 VIII Type A	100,0	106,5	95,5	-	-
KF-50 IX Type A	106,5	113,0	95,5	-	-
KF-50 X Type A	113,0	119,5	95,5	-	-

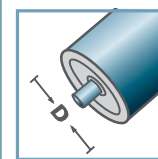
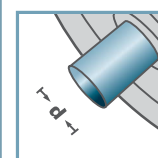
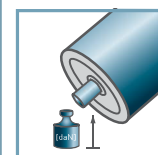
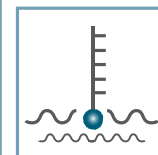
Other dimensions on request!

Conic Roller: Plastic

Endcap: Plastic



KF-50

D [mm]
50d [mm]
-C [daN]
-T [°C]
0° - 80°

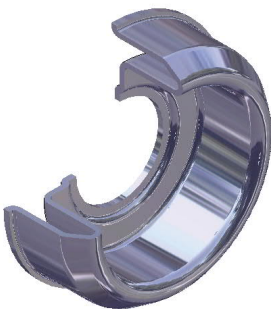
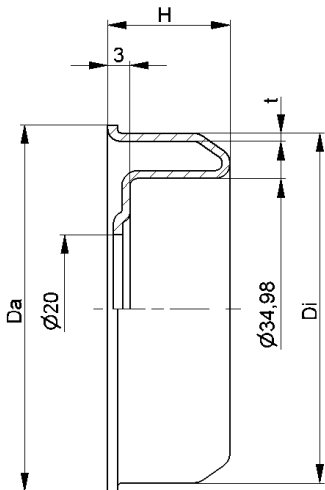
-



Carton [pcs.]



Taper Sleeves

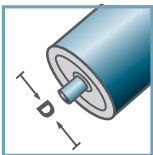


MRK-40				
Type	Di ±0,1	Da	H	t
MRK-50x1,5.40	47,3	49,5	16	1,2
MRK-50x2,0.40	46,3	49,5	16	1,2
MRK-60x2,0.40	56,3	59,5	16,5	1,5
MRK-60x3,0.40	54,3	59,5	16,5	1,5
Other dimensions on request!				

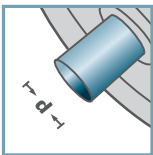
⚙ Housing: Steel, Zinc plated



MRK-40



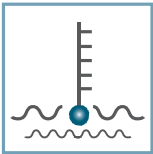
D [mm]
50 - 60



d [mm]
15



C [daN]
-



T [°C]
-



6202:
D35; d15; H11

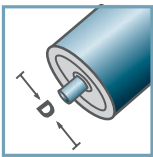
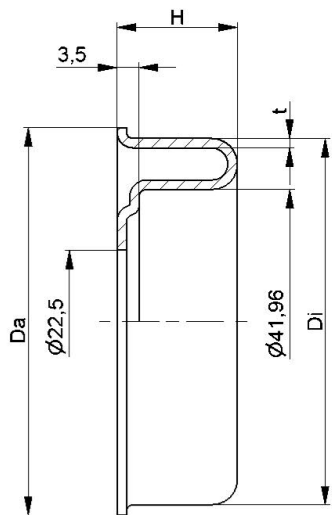


Carton [pcs.]

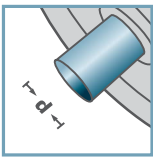


Steel Housing

MRK-6004



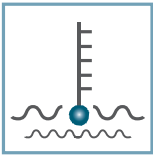
D [mm]
63,5



d [mm]
20



C [daN]
-



T [°C]
-



6004:
D42; d20; H12



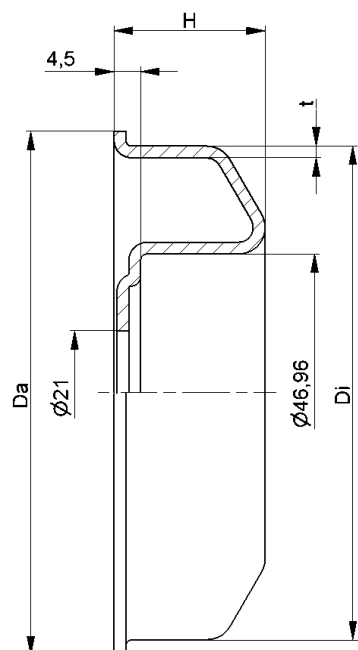
Carton [pcs.]

MRK-6004				
Type	Di ±0,1	Da	H	t
MRK-63,5x2,9/6004	58,1	61,5	19,0	1,5
Other dimensions on request!				

 Housing: Steel, Zinc plated



Steel Housing



MRK-6204

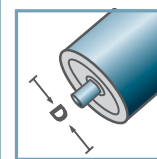
Type	Di $\pm 0,1$	Da	H	t
MRK-80x2,0/6204	76,5	79,5	23,5	2,0
MRK-80x3,0/6204	74,5	79,5	23,5	2,0
MRK-89x3,0/6204	83,5	88,5	23,5	2,0
MRK-89x3,25/6204	83,0	88,5	23,5	2,0
MRK-108x3,25/6204	102,0	107,5	25,0	2,0

Other dimensions on request!

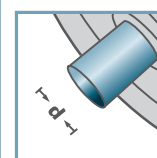
Housing: Steel, Zinc plated



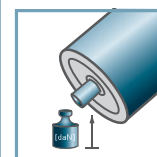
MRK-6204



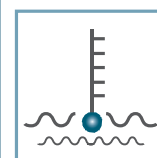
D [mm]
80 - 108



d [mm]
20



C [daN]
-



T [°C]
-

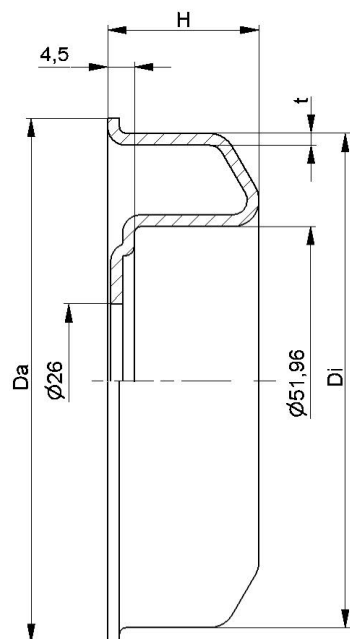


6204:
D47; d20; H14



Carton [pcs.]

Steel Housing



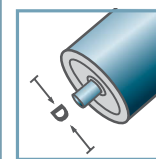
MRK-6205				
Type	Di ±0,1	Da	H	t
MRK-80x3,0/6205	74,5	79,5	23,5	2,0
MRK-89x3,0/6205	83,5	88,5	24,5	2,0
MRK-108x3,25/6205	102,0	107,5	25,5	2,0

Other dimensions on request!

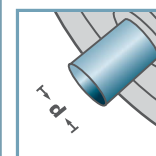
🔧 Housing: Steel, Zinc plated



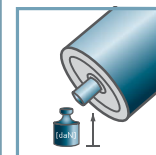
MRK-6205



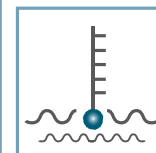
D [mm]
80 - 108



d [mm]
25



C [daN]
-



T [°C]
-

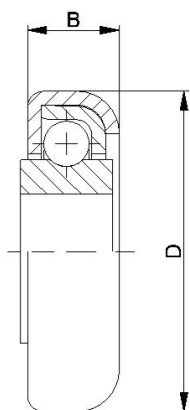


6205:
D52; d25; H15



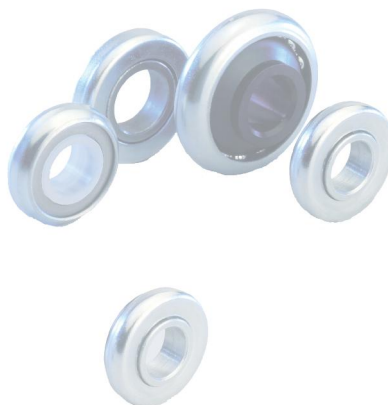
Carton [pcs.]

Steel Housing

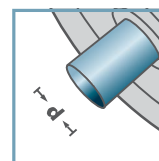


RL-0.280		
Type	D	B
RL-0.280	28,0	7,6
Other dimensions on request!		

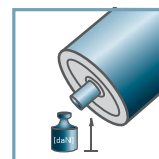
- ☛ Capsule: Steel, Zinc Plated
- ☛ Bearing Shell: Steel
- ☛ Ball: Steel
- ☛ Inner Race
 - ☛ Steel: C=10daN
 - ☛ Plastic: C=7daN; 0° - 80°



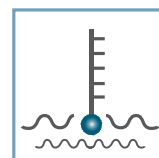
RL-0.280



d [mm]
10; 12; 12,8



C [daN]
7; 10



T [°C]
0° - 80°



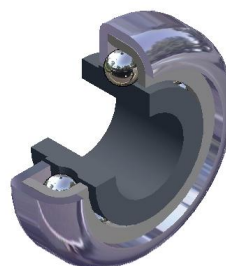
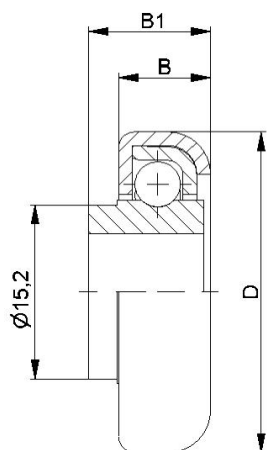
-



Carton [pcs.]

500

Radial Ball Bearings

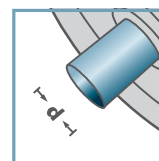


RL-0.280 with collar			
Type	D	B	B1
RL-0.280 m.B.	28,0	7,6	10,0
Other dimensions on request!			

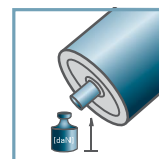
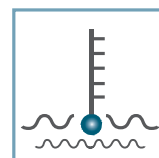
- ☛ Capsule: Steel, Zinc Plated
- ☛ Bearing Shell: Steel
- ☛ Ball, Steel
- ☛ Inner Race
 - ☛ Steel: C=10daN
 - ☛ Plastic: C=7daN; 0° - 80°



RL-0.280



10; 12

C [daN]
7; 10T [°C]
0° - 80°

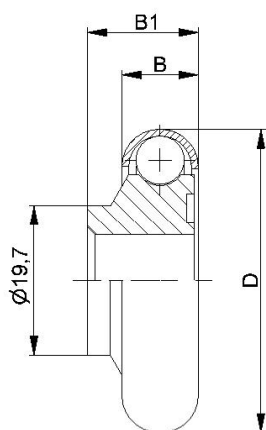
-



Carton [pcs.]

500

Radial Ball Bearings

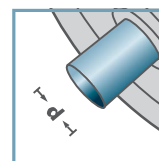


RL-0.400			
Type	D	B	B1
RL-0.400	40,0	10,0	14,5
Other dimensions on request!			

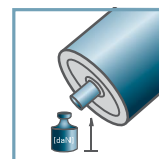
- ☛ Capsule: Steel, Zinc Plated
- ☛ Ball: Steel
- ☛ Inner Race: Plastic



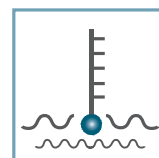
RL-0.400



d [mm]
12



C [daN]
7



T [°C]
0° - 80°



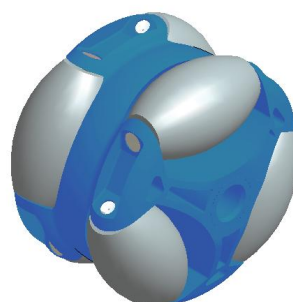
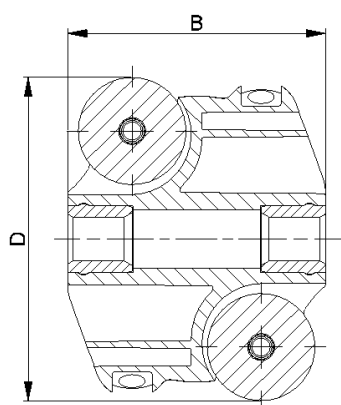
-



Carton [pcs.]

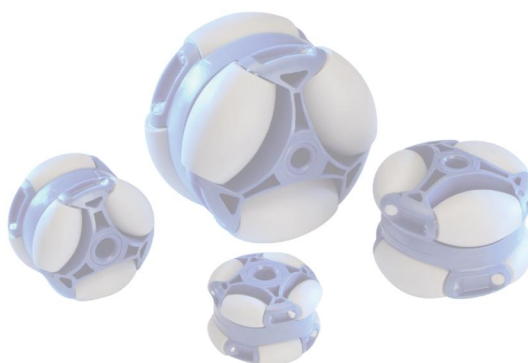
250

Radial Ball Bearings

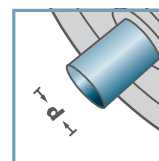


ASR-			
Type	D	B	Load Rating C [daN]
ASR-80	80	64	40
Other dimensions on request!			

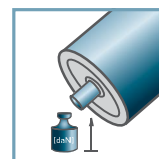
- Housing: Plastic
- Barrel-shaped Roller: Plastic
- Axis: 1.4301



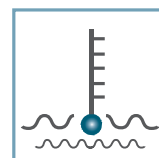
ASR-



d [mm]
8; 12; 15; SW14



C [daN]
40



T [°C]
0° - 80°



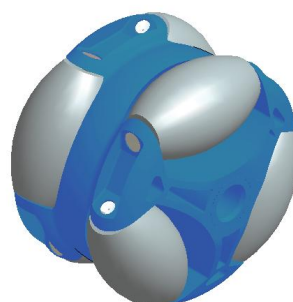
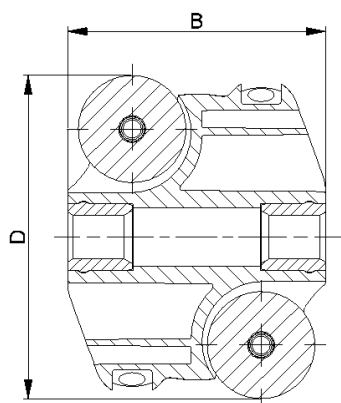
-



Carton [pcs.]

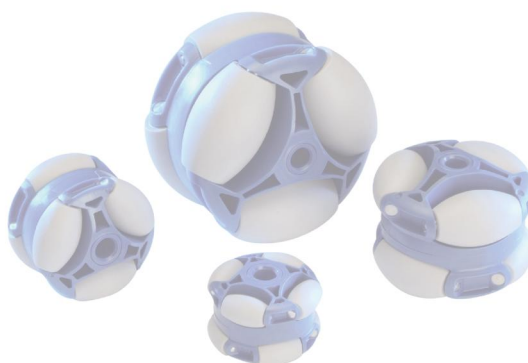
50

Polydirectional Wheel

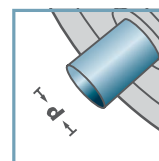


ASR-			
Type	D	B	Load Rating C [daN]
ASR-60	60	48	20
ASR-48	48	39	15
ASR-40	40	29	10
Other dimensions on request!			

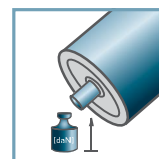
- ☛ Housing: Plastic
- ☛ Barrel-shaped Roller: Plastic
- ☛ Axis: 1.4301



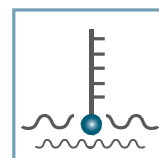
ASR-



d [mm]
8; 10; SW9



C [daN]
10 - 20



T [°C]
0° - 80°



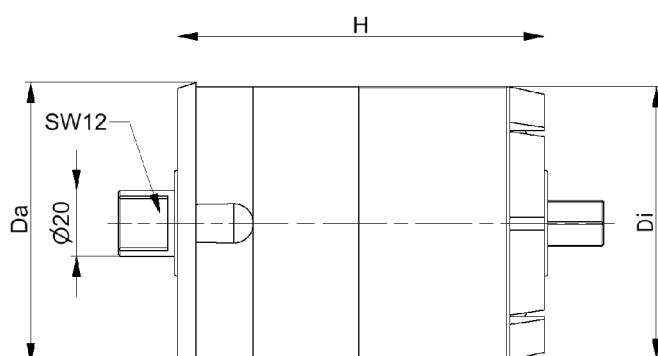
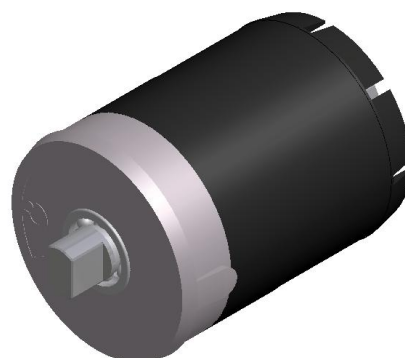
-



Carton [pcs.]

50

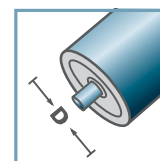
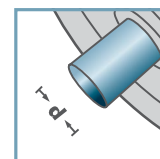
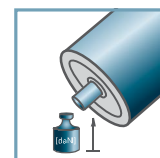
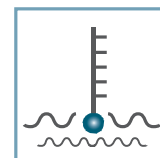
Polydirectional Wheel



BR-89x3,0-				
Type	Da	Di	H	Load Rating [kg]
200	88,5	83	115	200
500	88,5	83	115	500
800	88,5	83	115	800
1200	88,5	83	115	1200



BR-

D [mm]
89d [mm]
20C [daN]
250T [°C]
0° - 80°

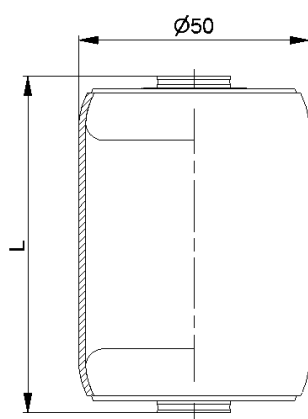
EP2



Carton [pcs.]

20

Brake Roller Unit



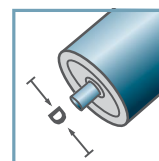
AMR-50x1,5.20		
Type	L	Load Rating C [daN]
AMR-50x1,5.20-66	66	160
AMR-50x1,5.20-73	73	160
AMR-50x1,5.20-80	80	160
AMR-50x1,5.20-100	100	160
Other dimensions on request!		

☛ Tube: Steel, Zinc plated

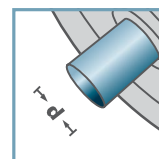
☛ Metal Roller Bearing MTR-20



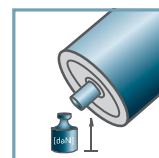
AMR-50.20



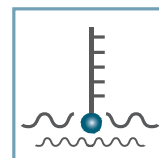
D [mm]
50



d [mm]
8; 10; 12; SW11



C [daN]
160



T [°C]
0° - 100°

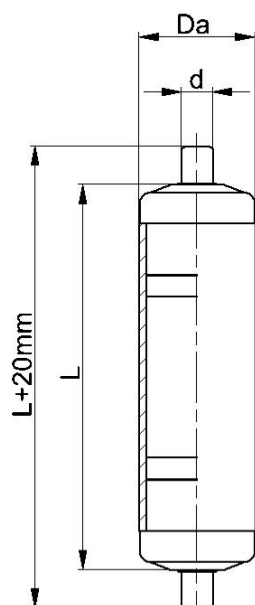


Oil

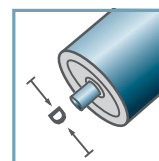


Carton [pcs.]

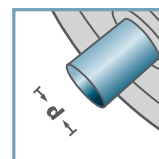
Metal Roller



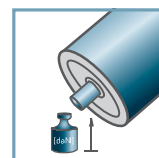
AKR-00/01



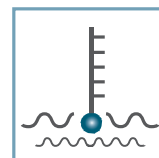
D [mm]
20; 30; 40



d [mm]
6; 8



C [daN]
10; 15



T [°C]
0° - 80°



Carton [pcs.]

AKR-00/01				
Type	D	d	L max.	Load Rating C [daN]
AKR-20x1,5.00.L	20	6	300	10
AKR-30x1,8.00.L	30	8	400	15
AKR-40x2,3.00.L	40	8	400	15
Other dimensions on request!				

• Tube: Plastic

• Plastic Roller Bearing KTR-00/01 with spring axis



Plastic Rollers with Spring Axis