



**PFI  
FERSA**

# Agricultural Bearings

TRUSTED AGRICULTURAL SOLUTIONS.  
FIELD TESTED. FARMER APPROVED.

[pfibearings.com](http://pfibearings.com)

# Exceptional Service

At PFI FERSA, we are dedicated to providing outstanding service to our customers. Our global presence, through our subsidiaries, ensures that we can offer localized support and quick response times.

Our commitment includes:

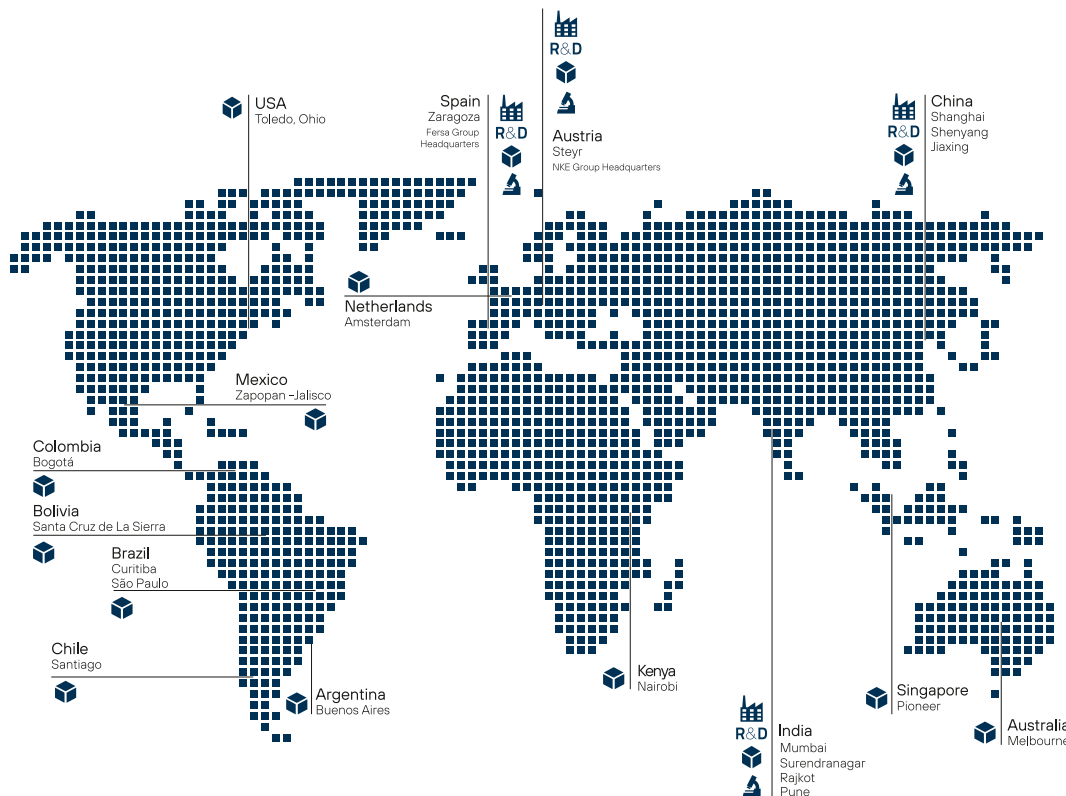
## Technical Support

Expert assistance to resolve any technical issues.

## Marketing Support

Helping our partners promote and sell our products.

available to meet your needs.



## Why PFI?

- **Group Infrastructure and R&D:** innovation of Fersa.
- **Subsidiary Service:**
- **End Customer Support:** assistance.
- **Immediate Stock:** Fast and reliable product availability.
- **OEM Quality:** performance.
- **Innovation and Reliability:** Continual investment in advanced technologies for superior products.



# Special ball bearings - Agri series

- Single and double row
- With round, square or hexagonal bore
- Relubricatable or non-relubricatable
- With spherical or cylindrical outer ring
- With inner ring extended on one or both sides

## Main applications:

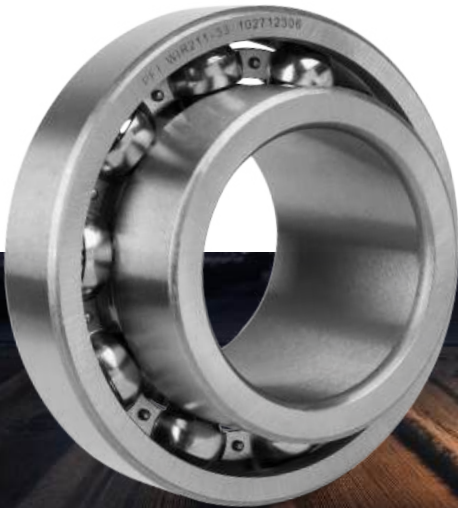
Disc harrows, seeders, mowers and combines

Highly effective seal design provides robust protection against the loss of lubricant and the ingress of wet or abrasive contaminants.

Prelubricated (non-relubricatable) versions: no cost for

danger of using the wrong grease or over lubricating. Time and money savings! Prevention from early bearing failure!

Relubricatable versions: a better fit for environments with extreme moisture prevalence.



## Radial insert ball bearings (Wide inner ring ball bearings)

The vast majority of our radial insert bearings are provided with triple-lip seals, an advanced sealing system that withstands the toughest environments of coarse dirt, dust, moisture, abrasion. At the same time it does an excellent job locking the lubricant in.

Some of the most common applications: seedling machines, tillage machines, combine harvesters, forage harvesters, bale chambers etc.

- Internal design is the same as a single row ball bearing
- Inner ring extended (on one side or both) to provide additional shaft support
- Locked to the shaft by set screws or by an eccentric locking collar
- Cylindrical or spherical outer rings
- Relubricatable (identified with the G prefix) and non-relubricatable configurations

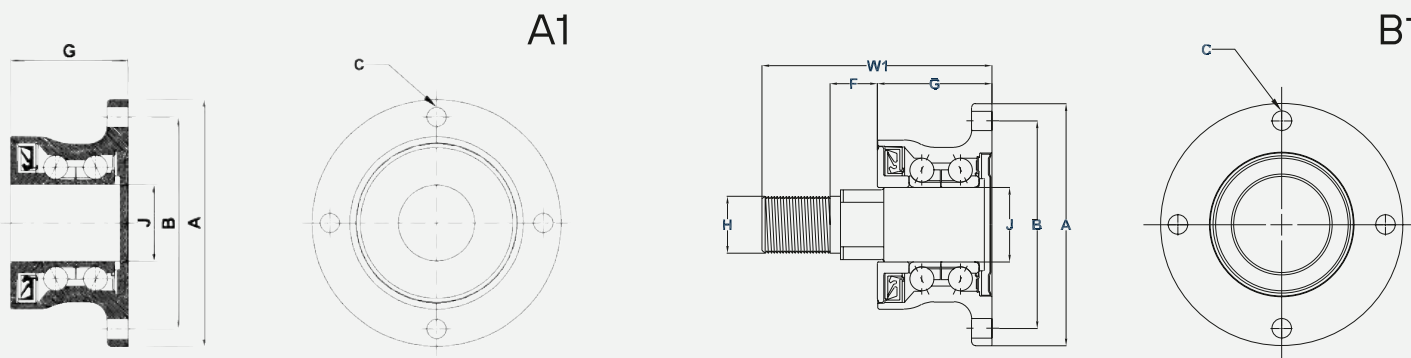


# Agri-hubs

Tough soil tillage? Put up a fight with our agri-hubs!

- Maintenance-free
- Greased and sealed for life
- Superior sealing grants maximum protection against dirt, dust, humidity
- Easy to assemble and dismount  
Optimized internal bearing design
- Optimized internal bearing design
- Elevated load capacity
- High stiffness minimizes disc tilt
- Impact resistant
- Increased productivity and operating life on the field

The configuration of our agri-hub includes a double row angular contact ball bearing with a forged steel integrated flange and an advanced sealing system (mudblock seal), that can stand the use of mud while it prevents any ingress of foreign matter, including moisture and water that could get into the unit even if the machine is pressure-washed after use.



Model	Type	Flange Diameter (mm)	Flange Thickness (mm)	Bearing ID (mm)	Bearing OD (mm)	Bearing Width (mm)	Seal ID (mm)	Seal OD (mm)	Seal Width (mm)	Seal Material	Seal Part Number
PHA0003	A1	30,0	117	98	59,5	-	-	M12x1,25	4	SKF	BAA-0003
PHA0003AK	A1	30,0	117	98	59,5	-	-	M12x1,25	4	SKF	BAA-0003A
PHA0614	B1	-	140	112	52,5	98,5	M24x2,0	M12x1,50	5	NFK	AHU30140A-01
PHA0004	B1	-	117	98	60	101,5	M22x1,5	M12x1,25	4	SKF	BAA-0004
PHA0005	B1	-	117	98	60	105,0	M24x2,0	M12x1,25	4	SKF	BAA-0005
PHA0006	B1	-	117	98	60	102,0	M22x1,5	M12x1,25	6	SKF	BAA-0006
PHA0007	B1	-	145	112	55	101,0	M24x2,0	M12x1,50	5	FLK	IL40-112-5T-M24x2
PHA0012	B1	-	117	98	60	101,0	M22x1,5	M12x1,25	5	SKF	BAA-0012

# Cast iron pillow and flange blocks

- Cast iron housings and an insert bearing with locking grub screws
- Triple-lip seal
- The spherical nature of the insert bearing compensates for angle and alignment errors
- Long-lasting protection from highly contaminated abrasive and corrosive materials



## UCP pillow block units

Pillow blocks (UCP) are designed to provide shaft support where mounting surface is parallel to the shaft axis and the adjustment during mounting is made through the slotted holes.

## UCF 4-Bolt flanged units

Flange blocks (UCF) have a 4-bolt mounting system and they are typically used when the shaft passes through the machine at a right angle.

In the event you need to relubricate the UCP and UCF blocks, always consult the specific relubrication cycles recommended in the operating manual of your equipment manufacturer.

# Other agricultural bearings

- Pressed steel housing flangettes
- Single and double row taper
- Roller bearings
- Needle roller bearings
- Clutch release bearings

PFI cost-effective, highly reliable, field-tested, long-life span, enhanced performance agricultural solutions support farmers and their productivity challenges by reducing downtime and maintenance costs, while maximizing output.



# PFI FERSA



Spain | Austria | China | India | USA | Brazil | Mexico | Colombia  
Chile | Bolivia | Argentina | Netherlands | Australia | Kenya



[pfibearings.com](http://pfibearings.com)